

DP, DV, VAC, BPV, EV, AV, GTC, SOOTVAC

Технические характеристики

По вопросам продаж и поддержки обращайтесь:

Алматы (7273)495-231
Ангарск (3955)60-70-56
Архангельск (8182)63-90-72
Астрахань (8512)99-46-04
Барнаул (3852)73-04-60
Белгород (4722)40-23-64
Благовещенск (4162)22-76-07
Брянск (4832)59-03-52
Владивосток (423)249-28-31
Владикавказ (8672)28-90-48
Владимир (4922)49-43-18
Волгоград (844)278-03-48
Вологда (8172)26-41-59
Воронеж (473)204-51-73
Екатеринбург (343)384-55-89
Иваново (4932)77-34-06
Ижевск (3412)26-03-58
Иркутск (395)279-98-46
Казань (843)206-01-48
Россия +7(495)268-04-70

Калининград (4012)72-03-81
Калуга (4842)92-23-67
Кемерово (3842)65-04-62
Киров (8332)68-02-04
Коломна (4966)23-41-49
Кострома (4942)77-07-48
Краснодар (861)203-40-90
Красноярск (391)204-63-61
Курск (4712)77-13-04
Курган (3522)50-90-47
Липецк (4742)52-20-81
Магнитогорск (3519)55-03-13
Москва (495)268-04-70
Мурманск (8152)59-64-93
Набережные Челны (8552)20-53-41
Нижний Новгород (831)429-08-12
Новокузнецк (3843)20-46-81
Ноябрьск (3496)41-32-12
Новосибирск (383)227-86-73
Киргизия +996(312)-96-26-47

Омск (3812)21-46-40
Орел (4862)44-53-42
Оренбург (3532)37-68-04
Пенза (8412)22-31-16
Петрозаводск (8142)55-98-37
Псков (8112)59-10-37
Пермь (342)205-81-47
Ростов-на-Дону (863)308-18-15
Рязань (4912)46-61-64
Самара (846)206-03-16
Саранск (8342)22-96-24
Санкт-Петербург (812)309-46-40
Саратов (845)249-38-78
Севастополь (8692)22-31-93
Симферополь (3652)67-13-56
Смоленск (4812)29-41-54
Сочи (862)225-72-31
Ставрополь (8652)20-65-13
Сургут (3462)77-98-35
Казахстан +7(7172)727-132

Сыктывкар (8212)25-95-17
Тамбов (4752)50-40-97
Тверь (4822)63-31-35
Тольятти (8482)63-91-07
Томск (3822)98-41-53
Тула (4872)33-79-87
Тюмень (3452)66-21-18
Ульяновск (8422)24-23-59
Улан-Удэ (3012)59-97-51
Уфа (347)229-48-12
Хабаровск (4212)92-98-04
Чебоксары (8352)28-53-07
Челябинск (351)202-03-61
Череповец (8202)49-02-64
Чита (3022)38-34-83
Якутск (4112)23-90-97
Ярославль (4852)69-52-93

WET/DRY VACUUMS COMPARISON CHART

.....
 I had to call Goodway to thank them and tell them what a lifesaver the EV-60T was during Hurricane Ida.
 - Joe DiPalma, Building Superintendent



PART NUMBER	EV-30	EV-60-T	EV-60-P
MOTOR(S)	Single	Twin	Twin
MOTOR POWER	1.6 HP	2 HP (total)	2 HP (total)
INPUT POWER	Standard: 10 amps, 115V, 60 Hz AC Optional: 5 amps, 230V, 50 Hz	Standard: 15 amps, 115V, 50/60 Hz AC Optional: 8 amps, 230V, 50/60 Hz	Standard: 15 amps, 115V, 50/60 Hz AC Optional: 8 amps, 230V, 50/60 Hz
POWER SUPPLY CORD	27', 16-3	27', 14-3	27', 14-3
AIR REQUIREMENTS	—	—	—
STATIC WATER LIFT	85"	82"	82"
AIR DISPLACEMENT	90 CFM	120 CFM	120 CFM
FILTRATION	15 microns polyester	15 microns polyester	None (wet pick-up only)
REVERSE PUMP-OUT SYSTEM	—	—	48 GPM
TANK	8.4 gallons stainless steel	20.6 gallons stainless steel	20.6 gallons stainless steel
DRY CAPACITY	5 gallons	14 gallons	—
WET CAPACITY	5.8 gallons	12 gallons	11 gallons
NOISE LEVEL	78 dBA	79 dBA	79 dBA
SPECIAL FEATURES	—	Tilt tank Roll-vac attachment available	Internal 48 GPM pump, Roll-vac attachment available
DIMENSIONS	13" diameter tank x 28" high	17" diameter tank x 38" high	17" diameter tank x 38" high
WEIGHT	22 lbs	53 lbs	69 lbs
ACCESSORIES/PRICES	See page 122	See page 122	See page 121

WET/DRY VACUUMS COMPARISON CHART



PART NUMBER	VAC-2	VAC-3A	AV-1200	GTC-540
MOTOR(S)	Twin	Triple	—	Twin
MOTOR POWER	2.7 HP (total)	4 HP (total)	—	4 HP (total)
INPUT POWER	Standard: 13 amps, 115V, 50/60 Hz AC Optional: 6.5 amps, 230V, 50/60 Hz	10 amps, 230V, 50/60 Hz AC	—	Standard: 14 amps, 115V, 50/60 Hz AC Optional: 7 amps, 230V, 50/60 Hz
POWER SUPPLY CORD	37', 14-3	37', 14-3	—	37', 14-3
AIR REQUIREMENTS	—	—	Minimum 50 PSI at 35 CFM, Maximum 90 PSI at 50 CFM	—
AIR LINE	—	—	1/2" I.D. or larger	—
STATIC WATER LIFT	66"	66"	170" at 90 PSI	50"
AIR DISPLACEMENT	180 CFM	245 CFM	125 CFM at 90 PSI	270 CFM
FILTRATION	15 microns polypropylene and 15 microns Dacron	15 microns polypropylene and 15 microns Dacron	15 microns polypropylene and 15 microns Dacron	15 microns polypropylene and 15 microns Dacron
TANK	15 gallons stainless steel tank, or 30 or 55 gallons bonderized steel drum	15 gallons stainless steel tank, or 30 or 55 gallons bonderized steel drum	15 gallons stainless steel tank, or 30 or 55 gallons bonderized steel drum	15 or 20 gallons stainless steel tank, or 30 or 55 gallons bonderized steel drum
DRY CAPACITY	14 gallons* (stainless steel tank)	14 gallons* (stainless steel tank)	14 gallons* (stainless steel tank)	20 gallons** (20 gal stainless steel tank)
WET CAPACITY	10 gallons* (stainless steel tank)	10 gallons* (stainless steel tank)	10 gallons* (stainless steel tank)	—
NOISE LEVEL	74 dBA	78 dBA	84 dBA	78 dBA
SPECIAL FEATURES	—	—	Air-powered	Polyethylene tank liner Disposable collection bag (20 or 30 gal)
DIMENSIONS	15" diameter tank x 36" high (VAC-2-15SS)	15" diameter tank x 36" high (VAC-3A-15SS)	15" diameter tank x 36" high (AV-1200-15SS)	15" diameter tank x 48" high (GTC-540-20SS)
WEIGHT	25 lbs (head only) and 66 lbs (VAC-2-15SS)	29 lbs (head only) and 70 lbs (VAC-3A-15SS)	17 lbs (head only) and 58 lbs (AV-1200-15SS)	25 lbs (head only) and 70 lbs (GTC-540-20SS)
ACCESSORIES/PRICES	See page 124	See page 124	See page 125	See page 21

* Dry/wet capacities shown for 15 gallon setup. Larger tank sizes will differ.
 ** Dry capacity shown for 20 gallon setup. Smaller and larger tank sizes will differ.

INDUSTRIAL VACUUMS COMPARISON CHART



PART NUMBER	DP-E1	DP-E1H	DV-M2	DV-E2
MOTOR(S)	Single	Single	Twin	Twin
MOTOR POWER	1.5	1.5	2.7 HP (total)	2.7 HP (total)
INPUT POWER	7.5 Amps, 120 V, 60 Hz AC	7.5 Amps, 120 V, 60 Hz AC	15 amps, 115V, 50/60 Hz AC	15 amps, 115V, 50/60 Hz AC
POWER SUPPLY CORD	30' (9.15m), 14-4	30' (9.15m), 14-4	30', 14-3	30', 14-3
AIR REQUIREMENTS	—	—	—	—
AIR LINE	—	—	—	—
STATIC WATER LIFT	75" (1.9m)	75" (1.9m)	90"	90"
AIR DISPLACEMENT	96 CFM	96 CFM	224 CFM	224 CFM
FILTRATION	Standard Filters 3.0 micron	Standard Filters 3.0 micron HEPA: 0.3 microns	Standard: 1 micron polyester pocket Optional: 0.3 microns HEPA	Standard: 1 micron polyester pocket Optional: 0.3 microns HEPA
TANK	4 gal (12 liters)	4 gal (12 liters)	12 gallons bonderized steel	27 gallons bonderized steel
DRY CAPACITY	4 gallons	4 gallons	12 gallons	27 gallons
WET CAPACITY	4 gallons	4 gallons	—	26 gallons
NOISE LEVEL	70db	70db	75 dBA	76 dBA
SPECIAL FEATURES			External filter shaker Roll-out tank	External filter shaker Roll-out tank
DIMENSIONS	38.75" high x 15.75" wide x 17.25" deep	38.75" high x 15.75" wide x 17.25" deep	15" diameter tank x 50" high	20 1/2" diameter tank x 60" high
WEIGHT	42 lbs (19kg)	42 lbs (19kg)	100 lbs	175 lbs
ACCESSORIES/PRICES	See page 123	See page 123	See page 126	See page 127

* with DA-CAGE-13 option

INDUSTRIAL VACUUMS COMPARISON CHART



PART NUMBER	DV-E3	DV-RV2	DV-RV3
MOTOR(S)	Triple	Twin	Triple
MOTOR POWER	4.6 HP (total)	2.7 HP (total)	4.6 HP (total)
INPUT POWER	Standard: 13 amps, 230V, 50/60 Hz AC Optional: 22.5 amps, 115V, 50/60 Hz	15 amps, 115V, 50/60 Hz AC	Standard: 13 amps, 230V, 50/60 Hz AC Optional: 22.5 amps, 115V, 50/60 Hz
POWER SUPPLY CORD	30', 14-3	30', 14-3	30', 14-3
AIR REQUIREMENTS	—	—	—
AIR LINE	—	—	—
STATIC WATER LIFT	90"	90"	90"
AIR DISPLACEMENT	353 CFM	224 CFM	353 CFM
FILTRATION	Standard: 1 micron polyester pocket Optional: 0.3 microns HEPA	Standard: 1 micron polyester pocket Optional: 0.3 microns HEPA	Standard: 1 micron polyester pocket Optional: 0.3 microns HEPA
TANK	27 gallons bonderized steel	16 gallons bonderized steel	16 gallons bonderized steel
DRY CAPACITY	27 gallons	16 gallons	16 gallons
WET CAPACITY	26 gallons	—	—
NOISE LEVEL	78 dBA	76 dBA	78 dBA
SPECIAL FEATURES	External filter shaker Roll-out tank	Front mounted floor tool; External filter shaker; Roll-out tank	Front mounted floor tool; External filter shaker; Roll-out tank
DIMENSIONS	20 1/2" diameter tank x 60" high	20 1/2" diameter tank x 49" high	20 1/2" diameter tank x 49" high
WEIGHT	180 lbs	140 lbs	145 lbs
ACCESSORIES/PRICES	See page 127	See page 128	See page 128

* with DA-CAGE-13 option

EXPLOSION PROOF VACUUMS

COMPARISON CHART



PART NUMBER	VAC-EX-120-9-SS	VAC-EX-120-5-SS	DV-AV-EP	DV-AV9-EX
MOTOR(S)	Single	Single	—	—
MOTOR POWER	1.6 HP	1.6 HP	—	—
INPUT POWER	10.5 amps, 115V, 60Hz	10.5 amps, 120V, 60Hz	—	—
POWER SUPPLY CORD	35'	35'	—	—
AIR REQUIREMENTS	—	—	Minimum: 50 PSI at 35 CFM, Maximum: 90 PSI at 50 CFM	Minimum: 50 PSI at 35 CFM, Maximum: 90 PSI at 50 CFM
AIR LINE	—	—	1/2" I.D. or larger	1/2" I.D. or larger
STATIC WATER LIFT	105"	105"	160" at 90 PSI and 50 CFM	160" at 90 PSI and 50 CFM
AIR DISPLACEMENT	110 CFM	110 CFM	125 CFM at 90 PSI and 50 CFM	125 CFM at 90 PSI and 50 CFM
FILTRATION	0.3 microns HEPA 99.99%	0.3 microns HEPA 99.99%	1 micron anti-static pocket	1 micron anti-static pocket and 0.3 microns HEPA
TANK	9 gallons stainless steel	5 gallons stainless steel	27 gallons stainless steel	12 gallons stainless steel
DRY CAPACITY	9 gallons	5 gallons	23 gallons	10 gallons
WET CAPACITY	—	—	—	—
NOISE LEVEL	72 dB	72 dB	74 dBA	76 dBA
SPECIAL FEATURES	Certified explosion proof; Static dissipating tool kit included	Certified explosion proof; Static dissipating tool kit included	Air-powered; External filter shaker; Roll-out tank	Air-powered; External filter shaker; External filter cleaner
DIMENSIONS (HxWxL)	50" high x 19.5" wide x 26.5" deep	39" high x 19.5" wide x 19.5" deep	20 1/2" diameter tank x 64" high	15" diameter tank x 51" high
WEIGHT	90 lbs	54 lbs	132 lbs	97 lbs
ACCESSORIES/PRICES	See page 129	See page 130	See page 131	See page 132



EXPLOSION PROOF AND CONTINUOUS DUTY VACUUM

COMPARISON CHART



PART NUMBER	VAC-EX-120-25SS	VAC-EX-AV-25SS	DV-SV
MOTOR(S)	Single	—	Single
MOTOR POWER	1.3 HP	—	2.5 HP
INPUT POWER	9 amps, 120V, 60 Hz	—	Standard: 8 amps, 230V, 50/60 Hz AC, three phase; Optional: 3.5 amps, 460V, 50/60 Hz AC, three phase
POWER SUPPLY CORD	40', 14-3	—	16', 14-4
AIR REQUIREMENTS	—	80 PSI at 40 CFM	—
AIR LINE	—	1/2" I.D. or larger	—
STATIC WATER LIFT	70"	116" at 80 PSI and 40 CFM	108"
AIR DISPLACEMENT	133 CFM	106 CFM at 80 PSI and 40 CFM	136 CFM
FILTRATION	HEPA 99.995% at 0.3 microns	HEPA 99.995% at 0.3 microns	1 micron polyester pocket
TANK	25 gallons stainless steel	25 gallons stainless steel	6 gallons stainless steel
DRY CAPACITY	16 gallons	16 gallons	4 gallons
WET CAPACITY	17 gallons	17 gallons	—
NOISE LEVEL	75 dBA	70 dBA	70 dBA
SPECIAL FEATURES	Certified Explosion proof tilt tank	Certified Explosion proof tilt tank	Continuous duty blower motor; Filter cleaning feature, Stationary
DIMENSIONS	43" high x 27" wide x 27" deep	46" high x 27" wide x 30" deep	33" high x 28" wide x 17.5" deep
WEIGHT	100 lbs	78 lbs	98 lbs
ACCESSORIES/PRICES	See page 133	See page 134	See page 135

INDUSTRIAL CONTINUOUS DUTY VACUUMS

COMPARISON CHART



PART NUMBER	DV-CD	DV-Z75	DV-CD4-FIXED
MOTOR(S)	Single	Single	Single
MOTOR POWER	3.5 HP	4.5 HP	4.5 HP
INPUT POWER	Standard: 10 amps, 230V, 50/60 Hz AC, three phase; Optional: 5 amps, 460V, 50/60 Hz, three phase	Standard: 14 amps, 230V, 50/60 Hz AC, three phase; Optional: 7 amps, 460V, 50/60 Hz, three phase	Standard: 14 amps, 230V, 50/60 Hz AC, three phase; Optional: 7 amps, 460V, 50/60 Hz, three phase
POWER SUPPLY CORD	30', 14-4	30', 14-4	30', 14-4
AIR REQUIREMENTS	—	—	—
AIR LINE	—	—	—
STATIC WATER LIFT	118"	100"	100"
AIR DISPLACEMENT	176 CFM	217 CFM	217 CFM
FILTRATION	Standard: 1 micron polyester pocket Optional: 0.3 microns HEPA	Standard: 1 micron polyester pocket Optional: 0.3 microns HEPA	Standard: 1 micron polyester pocket Optional: 0.3 microns HEPA
TANK	9 gallons bonderized steel	27 gallons bonderized steel	20 gallons bonderized steel
DRY CAPACITY	9 gallons	27 gallons	20 gallons
WET CAPACITY	—	26 gallons	—
NOISE LEVEL	70 dBA	77 dBA	77 dBA
SPECIAL FEATURES	Continuous dry blower motor; External filter shaker; Roll-out tank	Continuous dry blower motor; External filter shaker; Roll-out tank	Continuous duty blower motor; External filter shaker; Auto dump; Wall mounted
DIMENSIONS	45" high x 19" wide x 36" deep	20 1/2" diameter tank x 63" high	20 1/2" diameter tank x 90" high
WEIGHT	185 lbs	275 lbs	185 lbs
ACCESSORIES/PRICES	See page 136	See page 137	See page 138

* with DA-CAGE-13 option

INDUSTRIAL HEAVY DUTY VACUUMS

COMPARISON CHART



PART NUMBER	DV-CV8.5	DV-CV13	DV-2-MET	DV-CNC
MOTOR(S)	Single	Single	Twin	Single
MOTOR POWER	8.5 HP	13 HP	2.7 HP (total)	2.7 HP
INPUT POWER		30 amps, 460V, 50/60 Hz AC, three phase	15 amps, 115V, 50/60 Hz AC	Standard: 15 amps, 115V, 50/60 Hz AC
POWER SUPPLY CORD	30', 14-4	30', 12-4	30', 14-3	30', 14-3
AIR REQUIREMENTS	—	—	—	—
AIR LINE	—	—	—	—
STATIC WATER LIFT	140"	92"	90"	90"
AIR DISPLACEMENT	353 CFM	518 CFM	224 CFM	224 CFM
FILTRATION	Standard: 1 micron polyester pocket Optional: 0.3 microns HEPA	Standard: 1 micron polyester pocket Optional: 0.3 microns HEPA	0.05" metal chip basket	Standard: 0.05" metal chip basket; Optional: 300 microns polypropylene
TANK	27 gallons bonderized steel	27 gallons bonderized steel	27 gallons bonderized steel	27 gallons bonderized steel
DRY CAPACITY	27 gallons	27 gallons	11 gallons	11 gallons
WET CAPACITY	26 gallons	26 gallons	27 gallons	27 gallons
NOISE LEVEL	76 dBA	78 dBA	76 dBA	75 dBA
SPECIAL FEATURES	Continuous dry blower motor; External filter shaker; Roll-out tank	Continuous dry blower motor; External filter shaker; Roll-out tank	Tangential intake Chip collection basket	Tangential intake; Chip collection basket; External pump
DIMENSIONS (HxWxD)	60" x 25" x 44"	69" x 25" x 55"	20 1/2" diameter tank x 44" high	20 1/2" diameter tank x 52" high
WEIGHT	285 lbs	395 lbs	150 lbs	110 lbs
ACCESSORIES/PRICES	See page 139	See page 140	See page 141	See page 142
REVERSE PUMP-OUT SYSTEM	—	—	—	40 GPM

* with DA-CAGE-13 option

* with DA-CAGE-13 option



INDUSTRIAL CHIPMASTER® VACUUMS

COMPARISON CHART



PART NUMBER	DV-CM	DV-CM4	DV-CM7.5-TILT
MOTOR(S)	Triple	Single	Single
MOTOR POWER	4.5 HP	4.6 HP	6.5 HP
INPUT POWER	Standard: 13 amps, 230 V, 50/60 Hz AC	Standard: 13 amps, 230 V, 50/60 Hz AC, three phase Optional: 7 amps, 460 V, 50/60 Hz, three phase	10.3 amps, 460V, 50/60 Hz AC, three phase
POWER SUPPLY CORD	30', 14-3	30', 14-4	30', 14-4
AIR REQUIREMENTS			—
AIR LINE			—
STATIC WATER LIFT	90"	100"	160"
AIR DISPLACEMENT	353 CFM	217 CFM	170 CFM
FILTRATION	Standard: 0.05" metal chip basket and 300 microns polypropylene	Standard: 0.05" metal chip basket and 300 microns polypropylene	Standard: 0.05" metal chip basket; Optional: 300 microns polypropylene
TANK	66 gallons bonderized steel	66 gallons bonderized steel	105 gallons bonderized steel
DRY CAPACITY	22 gallons	22 gallons	11 gallons
WET CAPACITY	66 gallons	66 gallons	105 gallons
NOISE LEVEL	78 dBA	78 dBA	78 dBA
SPECIAL FEATURES	—	—	Vertical intake; Chip collection basket; External pump; Tilt-tank
DIMENSIONS	46" high x 22" wide x 44" deep	56" high x 22" wide x 44" deep	75" high x 22" wide x 44" deep
WEIGHT	220 lbs	260 lbs	395 lbs
ACCESSORIES/PRICES	See page 143	See page 143	See page 144
REVERSE PUMP-OUT SYSTEM	—	—	50 GPM

INDUSTRIAL BACKPACK VACUUMS

COMPARISON CHART



PART NUMBER	BPV-125	BPV-125H	EV-30H
MOTOR(S)	Single	Single	Single
MOTOR POWER	1.25 HP	1.25 HP	1.6 HP
INPUT POWER	Standard: 10.5 amps, 115V, 50/60 Hz	Standard: 10.5 amps, 115V, 50/60 Hz	Standard: 10 amps, 115V, 50/60 Hz AC; Optional: 5 amps, 230V, 50/60 Hz
POWER SUPPLY CORD	45'	45'	27', 16-3
AIR REQUIREMENTS	—	—	—
AIR LINE	—	—	—
STATIC WATER LIFT	125"	125"	90"
AIR DISPLACEMENT	53 CFM	53 CFM	115 CFM
FILTRATION	1 micron paper	1 micron paper and 0.3 microns HEPA	5 microns paper, 2 microns paper and 0.3 microns HEPA
TANK	1.5 gallons	1.5 gallons	10.6 gallons polished steel
DRY CAPACITY	0.87 gallon	0.87 gallon	3.2 gallons
WET CAPACITY	—	—	—
NOISE LEVEL	65 dBA	65 dBA	78 dBA
SPECIAL FEATURES	Backpack	Backpack	HEPA filter Disposable collection bag
DIMENSIONS	20" high x 12" wide x 14" deep	20" high x 12" wide x 14" deep	13" diameter tank x 38" high
WEIGHT	10.6 lbs	11 lbs	36 lbs
ACCESSORIES/PRICES	See page 146	See page 146	See page 147



INDUSTRIAL HEPA VACUUMS

COMPARISON CHART



PART NUMBER	VAC-2-HEPA	DV-3-SSH	DV-AH	DV-802WD
MOTOR(S)	Twin	Triple	—	Single
MOTOR POWER	2.7 HP (total)	3 HP (total)	—	6 HP
INPUT POWER	Standard: 13 amps, 115V, 50/60 Hz AC; Optional: 6.5 amps, 230V, 50/60 Hz	18.2 amps, 115V, 50/60 Hz AC	—	17 amps, 115V, 50/60 Hz
POWER SUPPLY CORD	37', 14-3	30', 12-3	—	30', 10-3
AIR REQUIREMENTS	—	—	Minimum 50 PSI at 35 CFM, Maximum 90 PSI at 50 CFM	—
AIR LINE	—	—	1/2" I.D. or larger	—
STATIC WATER LIFT	66"	81"	160" at 90 PSI	82"
AIR DISPLACEMENT	150 CFM	286 CFM	125 CFM at 90 PSI	144 CFM
FILTRATION	5 microns paper and 0.3 microns HEPA	3 microns polyester pocket and 0.3 microns HEPA	1 micron anti-static pocket and 0.3 microns HEPA	Standard: 300 micron PPL anti-foam wet filter HEPA: .18 micron
TANK	20 gallons stainless steel	16 gallons stainless steel	12 gallons bonderized steel	26 gallons
DRY CAPACITY	5 gallons	16 gallons	12 gallons	—
WET CAPACITY	12 gallons	—	—	26 gallons
NOISE LEVEL	74 dBA	78 dBA	76 dBA	78dB
SPECIAL FEATURES	HEPA filter Disposable collection bag	HEPA filter Detachable roll-out collection tank	Air-powered; HEPA filter; External filter shaker; Roll-out tank	79 GPM Integrated pump out feature 30 ft pump out hose
DIMENSIONS	15" diameter tank x 40" high	20 1/2" diameter tank x 49" high	15" diameter tank x 51" high	47" high x 19" wide x 23" deep
WEIGHT	64 lbs	145 lbs	97 lbs	108 lbs
ACCESSORIES/PRICES	See page 148	See page 149	See page 150	See page 145

MAKE QUICK WORK OF BIG SPILLS



EV-60-P Easy In, Easy Out

The internal pump in the EV-60-P allows for controlled discharge of liquids, giving you the option to drain the recovery tank during operation or pump it out later. For added versatility, independent motor switches enable you to run the unit with one motor or two, depending on your efficiency or power requirements. With the EV-60-P, the choice is always yours and you're in control!

EV-60-P: Commercial Pump-Out Wet Vacuum, 115V, including 20.6 gallon stainless steel tank, internal pump, handles, wheels and casters, 8 1/2' vinyl crushproof hose, three piece 52" wand, 16" squeegee floor tool, and 8' vinyl discharge hose

OPTIONAL

EV-RV-W: Roll-Vac Attachment with Squeegee.....

8010: Additional/Replacement Discharge Hose, up to 100' long (specify size)



FEATURES

- Internal pump
- Two heavy-duty motors
- Independent motor switches
- Stainless steel tank
- Liquid shut-off
- Multiple cleaning tools
- Includes hose, wand and tools



EV-60-P	
Motor Power	2 HP (total)
Input Power	Standard: 15 amps, 115V, 50/60 Hz Optional: 8 amps, 230V, 50/60 Hz
Power Supply Cord	27', 14-3
Static Water Lift	82"
Air Displacement	120 CFM
Filtration	None (wet pick-up only)
Reverse Pump-out System	48 GPM
Tank	20.6 gallons stainless steel
Wet Capacity	11 gallons
Noise Level	79 dBA
Dimensions	17" diameter tank x 38" high
Weight	69 lbs

HIGH PERFORMANCE - LOW WALLET IMPACT



EV-30 Economical and Effective

Look no further than the EV-30 for an economical wet/dry vacuum that performs under everyday use. This commercial unit comes with a reusable filter to save you even more money. Its powerful motor and durable construction make it a perfect shop workhorse for a variety of cleanup situations.

A single stainless steel tank handles collection duties for both dry debris and liquid recovery. With four rugged casters, this highly maneuverable unit rolls easily wherever you need to take it.

EV-30: Commercial Wet-Dry Vacuum, including filter, 8.4 gallon stainless steel tank, casters, 8 1/2' vinyl crushproof hose, three piece 52" wand, 16" floor brush, 16" squeegee floor tool, 3" dusting brush and 9 1/2" crevice tool

OPTIONAL FOR EV-60-T

EV-RV-D: Roll-Vac Attachment with Brush.....

EV-RV-W: Roll-Vac Attachment with Squeegee

EV-60-T Functionality First

Thanks to the integrated tilt bar on this commercial wet-dry vacuum, unloading its voluminous 20.6 gallon tank is a simple task. Twin motors with independent switches enable you to run it on one or both motors to suit your needs. It also has a liquid shutoff so you don't have to worry about overflow.

With strong suction and a wide assortment of attachments, the EV-60-T is great as an all-purpose shop vac or as a dedicated unit for your specialty jobs.

EV-60-T: Commercial Tilt Wet-Dry Vacuum, including filter, 20.6 gallon stainless steel tank, tilt bar, handles, wheels and casters, 8 1/2' vinyl crushproof hose, three piece 52" wand, 16" floor brush, 16" squeegee floor tool, 3" dusting brush, and 9 1/2" crevice tool.....

FEATURES

- Tilt bar for easy dumping (EV-60-T)
- Two heavy-duty motors (EV-60-T)
- Independent motor switches (EV-60-T)
- Stainless steel tank
- Liquid shut-off
- Reusable filter
- Includes hose, wand and tools

REPLACEMENT FILTERS

EV-30-FILTER: Polyester Filter, 15 microns

EV-60-FILTER: Polyester Filter, 15 microns



	EV-30	EV-60-T
Motor Power	1.6 HP	2 HP (total)
Input Power	Standard: 10 amps, 115V, 60 Hz AC Optional: 5 amps, 230V, 50 Hz	Standard: 15 amps, 115V, 50/60 Hz Optional: 8 amps, 230V, 50/60 Hz
Power Supply Cord	27', 16-3	27', 14-3
Static Water Lift	85"	82"
Air Displacement	90 CFM	120 CFM
Filtration	15 microns polyester	15 microns polyester
Tank	8.4 gallons stainless steel	20.6 gallons stainless steel
Dry Capacity	5 gallons	14 gallons
Wet Capacity	5.8 gallons	12 gallons
Noise Level	78 dBA	79 dBA
Dimensions	13" diameter tank x 28" high	17" diameter tank x 38" high
Weight	22 lbs	53 lbs



INDISPENSABLE COMPACT HEPA INDUSTRIAL VACUUM



DP-E1

DP-E1-H
HEPA FILTERED

DETACHABLE
COLLECTION
DRUM FOR
EASY DUMPING.

DP-E1 & DP-E1-H The Mighty Mini Industrial Vacuum That Delivers!

The DP-E1-H Compact HEPA Industrial Vacuum is built tough to withstand daily harsh industrial applications while being compact and powerful simultaneously. The vacuum is compact and mighty, and it doesn't skimp on features like a detachable collection tank, multi-stage HEPA filtration (choose HEPA model), and a complete accessory package to handle most daily cleanup needs. The DP-E1-H industrial vacuum offers outstanding dry performance while handling minor wet pickup of saturated material. The machine boasts a powerful motor, producing 75" of lift and 96 CFM. The HEPA model features a true HEPA filtration system that delivers 99.97% filtration at 0.3 microns!

Don't need HEPA? The DP-E1 models give you powerful wet/dry pickup performance, accessories, and standard, non-HEPA filtering.

	DP-E1	DP-E1-H
Motor Power	1.5 HP	1.5 HP
Input Power	7.5 amps, 120V, 60 Hz AC	7.5 amps, 120V, 60 Hz AC
Air Flow	107 CFM	107 CFM
Water Lift	75"	75"
Noise Level	70 db	70 db
Filter	3.0 micron	0.3 micron, HEPA
Capacity	4 gallons	4 gallons
Weight	42 lbs	43 lbs

FEATURES

- Ergonomic Design
- Lightweight
- Easy to Use
- Steel Constructed
- Includes Accessory Kit
- 0.3 Micron HEPA Filter (on HEPA model only)
- Detachable Collection Drum
- External Filter Shaker

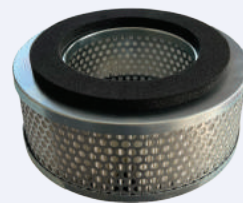
DP-E1: Vacuum & Accessories 115V 50/60hz

DP-E1-H: HEPA Vacuum & Accessories 115V 50/60hz.....

REPLACEMENT FILTERS



DP-E1-106
Standard 3.0 micron
12 pocket filter



DP-E1-107
0.3 Micron
HEPA filter

DOUBLE YOUR PERFORMANCE

WITH TWIN MOTORS



VAC-2 Increased Suction

The VAC-2 features dual-motors for increased suction. Its power and versatility make it an ideal choice for a wide range of general shop cleanup tasks, from liquid recovery to picking up metal shavings. With specially designed adapter rings, the VAC-2 is compatible with 15 gallon tanks or with 30 or 55 gallon drums to suit the size of the cleanup jobs you encounter.

A wide array of options and configurations are also available to suit your unique applications.

Note: Available with three motor and 230V configuration, call for VAC-3A pricing.

FEATURES

- Two heavy-duty motors
- Exhaust muffler
- Three tank sizes
- Liquid shut-off
- Metal deflector
- Reusable filters
- 1 1/2" or 2" hoses

ACCESSORIES

VAC-KIT-9: 1 1/2" Industrial Vacuum Accessory Kit: 10' Neoprene Wire Reinforced Hose, 54" Double Bend Wand, 54" Extension Tube, 5' Extension Tube, 14" Nylon Floor Brush, 14" Squeegee Floor Tool, 14" Rough Surface Fiber Shod Floor Tool, 8" Wall and Overhead Brush, and 27" Steel Crevice Tool.....

DUMP VALVE (FACTORY INSTALLED)

DDV-100M: Full Flow Ball Valve, 1"

DDV-E90: Elbow, 90°

DDV-675: Garden Hose Connector

STORAGE POUCH

VAC-TOOL-TOTE: Durabond Tool Storage Pouch.

REPLACEMENT FILTERS

GTC-175: Polypropylene Filter, 15 microns.....

GTC-176: Dacron Filter, 15 microns

DISCHARGE PUMP

The VAC-2-55-DD Industrial Vacuum is available with a 1/3 HP, 45 GPM, stainless steel internal pump for discharging recovered liquids.

VAC-2-55-PUMP: Same as VAC-2-55-DD, plus internal pump, discharge port and hose



VAC-2-15SS

VAC-2-30-DD

VAC-2-55-DD

CE
CERTIFICATION ONLY APPLIES
TO VAC-2A 230V MODEL.

VAC-2-15SS: Industrial Wet-Dry Vacuum, including filters, 15 gallon stainless steel tank, handles, wheels and casters.....

VAC-2-30*: Industrial Wet-Dry Vacuum, including filters and 18"-20" diameter drum adapter ring (no drum)

VAC-2-30DD: Same as VAC-2-30, plus 30 gallon bonderized steel drum and dolly.....

VAC-2-55*: Industrial Wet-Dry Vacuum, including filters and 22"-24" diameter drum adapter ring (no drum)

VAC-2-55DD: Same as VAC-2-55, plus 55 gallon bonderized steel drum and dolly.....

**Note: Fits any standard drum 30 or 55 gallon depending on model.*

Note: Vacuums do not include accessories. Order VAC-KIT-9, also shown on page 151, or individual accessories shown on pages 151-159.

VAC-2	
Motor Power	2.7 HP (total)
Input Power	Standard: 13 amps, 115V, 50/60 Hz AC Optional: 6.5 amps, 230V, 50/60 Hz
Power Supply Cord	37', 14-3
Static Water Lift	66"
Air Displacement	180 CFM
Filtration	15 microns polypropylene and 15 microns Dacron
Tank/Drum	15 gallons stainless steel tank, or 30 or 55 gallons bonderized steel drum
Dry Capacity	14 gallons (stainless steel tank)
Wet Capacity	10 gallons (stainless steel tank)
Noise Level	74 dBA
Dimensions	15" diameter tank x 36" high (VAC-2-15SS)
Weight	25 lbs (head only) and 66 lbs (VAC-2-15SS)

THIS AIR VACUUM DOESN'T SKIMP ON POWER



AV-1200 Safe and Powerful

For situations when electric power is unavailable or prohibited, the Air-powered AV-1200 is the preferred choice. Maintenance departments all over count on this dependable vacuum.

With the ability to devour 45 gallons per minute, it handles all your high-volume liquid recovery needs. From machine oil to coolant and metal chips to fine powders, no matter what your clean up entails, the AV-1200 is up to the task.

FEATURES

- Air-powered
- No moving parts
- Three tank sizes
- Liquid shut-off
- Metal deflector
- Reusable filters
- 1 1/2" or 2" hoses

AV-1200-15SS: Air-powered Wet-Dry Vacuum, including filters, 15 gallon stainless steel tank, handles, wheels and casters

AV-1200-30*: Air-powered Wet-Dry Vacuum, including filters and 18"-20" diameter drum adapter ring (no drum).....

AV-1200-30-DD: Same as AV-1200-30, plus 30 gallon bonderized steel drum and dolly

AV-1200-55*: Air-powered Wet-Dry Vacuum, including filters and 22"-24" diameter drum adapter ring (no drum).....

AV-1200-55-DD: Same as AV-1200-55, plus 55 gallon bonderized steel drum and dolly

**Note: Fits any standard drum 30 or 55 gallon depending on model.*

Note: Vacuums do not include accessories. Order VAC-KIT-9, also shown on page 151, or individual accessories shown on pages 151-159.



ACCESSORIES

VAC-KIT-9-G: 1 1/2" Grounded Industrial Vacuum Accessory Kit: 15' Neoprene Wire Reinforced Hose with Grounding Wire, 54" Double Bend Wand, 54" Extension Tube, 5' Extension Tube, 14" Nylon Floor Brush, 14" Squeegee Floor Tool, 14" Rough Surface Fiber Shod Floor Tool, 8" Wall and Overhead Brush, and 27" Steel Crevice Tool

DUMP VALVE (FACTORY INSTALLED)

DDV-100M: Full Flow Ball Valve, 1"

DDV-E90: Elbow, 90°

DDV-675: Garden Hose Connector.....

STORAGE POUCH

VAC-TOOL-TOTE: Durabond Tool Storage Pouch.

REPLACEMENT FILTERS

GTC-175: Polypropylene Filter, 15 microns.....

GTC-176: Dacron Filter, 15 microns



AV-1200

Air Requirements	Minimum 50 PSI at 35 CFM, Maximum 90 PSI at 50 CFM
Air Line	1/2" I.D. or larger
Static Water Lift	170" at 90 PSI
Air Displacement	125 CFM at 90 PSI
Filtration	15 microns polypropylene and 15 microns Dacron
Tank/Drum	15 gallons stainless steel tank, or 30 or 55 gallons bonderized steel drum
Dry Capacity	14 gallons (stainless steel tank)
Wet Capacity	10 gallons (stainless steel tank)
Noise Level	84 dBA
Dimensions	15" diameter tank x 36" high (AV-1200-15SS)
Weight	25 lbs (head only) and 66 lbs (VAC-2-15SS)

THE ULTIMATE WORKHORSE DUST HOG



DV-M2 Compact and Powerful

EXTREME-DUTY
AND ECONOMICAL

Now you can enjoy the same features as our extreme-duty industrial vacuums at an economical price. The DV-M2 uses 21.53 square feet of filter material that is pulled and pleated into pockets, drastically increasing the surface area of the filter and providing maximum filtration of fine particles.

It's perfect for manufacturing, powder coating and many other industrial applications.

DV-M2: Industrial Dry Vacuum, including filter, external filter shaker, 12 gallon detachable tank, handles, and casters.....

Note: Vacuums do not include accessories. Order DA-KIT-D or individual accessories shown on pages 151-159.

REPLACEMENT FILTERS

DA-PF-16A: Anti-Static Pocket Filter, 1 micron

OPTIONAL FILTERS

DA-HF: HEPA Filter, 0.3 microns

DV-M2	
Motor Power	2.7 HP (total)
Input Power	15 amps, 115V, 50/60 Hz AC
Power Supply Cord	30', 14-3
Static Water Lift	90"
Air Displacement	224 CFM
Filtration	Standard: 1 micron polyester pocket Optional: 0.3 microns HEPA
Tank	12 gallons bonderized steel
Dry Capacity	12 gallons
Noise Level	75 dBA
Dimensions	15" diameter tank x 50" high
Weight	100 lbs



FEATURES

- Two heavy-duty motors
- Reusable pocket filter
- Detachable roll-out collection tank
- 1 1/2", 2" or 3" hoses (depending on moisture content)
- External filter shaker
- Multiple cleaning tools

VACUUM ACCESSORY KITS

DA-KIT-D: 2" Dry DV Vacuum Accessory Kit: 10' Vinyl Crushproof Hose with Hose Cuff, Hose Adapter for connecting DV Vacuums to 2" hoses, 54" Double Bend Wand, 21" Floor Tool, 18" Bulk Pickup Nozzle and 24" Steel Crevice Tool.....



POWER AND CAPACITY LOOK NO FURTHER!



WET-DRY VACUUM when this accessory is added  DA-CAGE-B

NEW & IMPROVED - ANTI-STATIC FILTER!

FEATURES

- Tool basket
- 1 1/2", 2" or 3" hoses
- External filter shaker
- Reusable pocket filter
- Detachable roll-out collection tank
- Two (DV-E2) or three (DV-E3) heavy-duty motors

DV-E2 and DV-E3 Power Plus Volume

In either the twin or triple-motor configuration, you can be sure that this heavy-duty vacuum will handle the heavy lifting. With a whopping 4.6 HP for the DV-E3 model, even heavy metal shavings and concrete particles are easily devoured.

An advanced filtration system keeps your environment dirt and dust free, and an integrated tool caddy holds all of your attachments close at hand for every situation you're likely to encounter. Plus, the large capacity collection tank is fully detachable, enabling you to roll it away from under the vacuum for easy handling.

DV-E2: Industrial Wet-Dry Vacuum, including filter, external filter shaker, 27 gallon detachable tank, handles, and casters

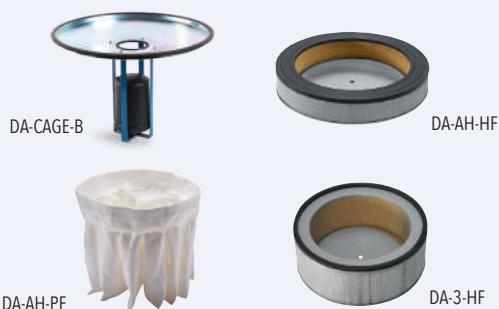
DV-E3: Industrial Wet-Dry Vacuum, including filter, external filter shaker, 27 gallon detachable tank, handles, and casters

Note: Vacuums do not include accessories. Order DA-KIT-D, DA-KIT-W or individual accessories shown on page 151-159.

REPLACEMENT FILTERS

DA-AH-PF: Anti-Static Pocket Filter, 1 micron

REPLACEMENT FILTERS



SEE PAGES 157-159

	DV-E2	DV-E3
Motor Power	2.7 HP (total)	4.6 HP (total)
Input Power	15 amps, 115V, 50/60 Hz AC	Standard: 13 amps, 230V, 50/60 Hz AC
Power Supply Cord	30', 14-3	30', 14-3
Static Water Lift	90"	90"
Air Displacement	224 CFM	353 CFM
Filtration	Standard: 1 micron anti-static pocket	Standard: 1 micron anti-static pocket
Tank	27 gallons bonderized steel	27 gallons bonderized steel
Dry Capacity	27 gallons	27 gallons
Wet Capacity	26 gallons	26 gallons
Noise Level	76 dBA	78 dBA
Dimensions	20 1/2" diameter tank x 60" high	20 1/2" diameter tank x 60" high
Weight	175 lbs	180 lbs

WALK-BEHIND DRY VACUUM FOR LARGE AREAS



NEW & IMPROVED - LARGER TANK!

DV-RV-2 & DV-RV-3 Superior Features

The twin and triple-motor DV-RV-2 and DV-RV-3 were specially designed to clean large warehouse floors and production spaces in short time. A 28" front mounted floor attachment spreads the suction power wide for extra efficient cleaning power, saving you time.

The unit also saves you money by converting to an all-purpose industrial vacuum by simply replacing the floor attachment with a conventional hose or accessory. For easy unloading of the 16 gallon collection tank, simply roll it out from under the vacuum unit.

DV-RV-2: Dry Roll-Vac Vacuum, including 28" front mounted floor attachment, filter, external filter shaker, 16 gallon detachable tank, handles, and casters

DV-RV-3: Dry Roll-Vac Vacuum, including 28" front mounted floor attachment, filter, external filter shaker, 16 gallon detachable tank, handles, and casters

Note: Vacuums do not include accessories. Order DA-KIT-D or individual accessories shown on pages 151-159.

	DV-RV2	DV-RV3
Motor Power	2.7 HP (total)	4.6 HP (total)
Input Power	15 amps, 115V, 50/60 Hz AC	Standard: 13 amps, 230V, 50/60 Hz AC; Optional: 22.5 amps, 115V, 50/60 Hz
Power Supply Cord	30', 14-3	30', 14-3
Static Water Lift	90"	90"
Air Displacement	224 CFM	353 CFM
Filtration	Standard: 1 micron polyester pocket; Optional: 0.3 microns HEPA	Standard: 1 micron polyester pocket; Optional: 0.3 microns HEPA
Tank	16 gallons bonderized steel	16 gallons bonderized steel
Dry Capacity	16 gallons	16 gallons
Noise Level	76 dBA	78 dBA
Dimensions	20 1/2" diameter tank x 49" high	20 1/2" diameter tank x 49" high
Weight	140 lbs	145 lbs



FEATURES

- 28" front mounted floor tool
- Two (DV-RV2) or three (DV-RV3) heavy-duty motors
- Detachable roll-out collection tank
- External filter shaker
- Reusable pocket filter
- 1 1/2", 2" or 3" hoses

REPLACEMENT FILTERS

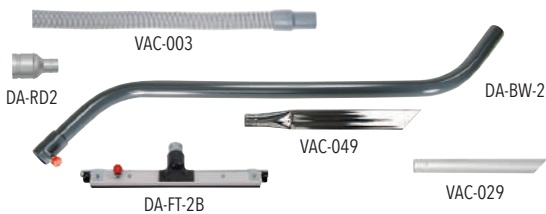
DA-AH-PF: Polyester Pocket Filter, 1 micron.....

REPLACEMENT TOOLS

DA-RV-ATT-1: Bristle for floor attachment

DA-RV-ATT-2: Squeegee Blade for floor attachment.

VACUUM ACCESSORY KITS



DA-KIT-D: 2" Dry DV Vacuum Accessory Kit: 10' Vinyl Crushproof Hose with Hose Cuff, Hose Adapter for connecting DV Vacuums to 2" hoses, 54" Double Bend Wand, 21" Floor Tool, 18" Bulk Pickup Nozzle and 24" Steel Crevice Tool.....



PICK UP FINE PARTICLES - SAFE AND HASSLE-FREE VACUUM



PERFECT FOR BAKERIES
AND FOOD INDUSTRIES

CERTIFIED FOR USE IN HAZARDOUS LOCATIONS:

- Class II, Division 2, Groups F & G



CERTIFIED ZONE 22 HAZARDOUS AREAS / DUST
GROUP IIIC (CONDUCTIVE DUSTS)

Customer service is beyond super! After putting my orders online, they noticed my errors in size and reached out to double check before shipping out. - **Tim G**

VAC-EX-120-9-SS Hassle-Free

Designed for light powders like flours, sugars, or additives, this 115V electric dry industrial vacuum is dust ignition protected (Class II, Division 2, Groups F&G) and ready to make quick work of cleanup in your plants and production environments.

Compact and powerful, this vacuum boasts a 9 gallon detachable collection tank for added productivity. Add the 99.99% at 0.3 microns HEPA filtration, a manual filter shaker, stainless steel construction, and this workhorse is ready to get your location clean quickly and safely.

FEATURES

- Electric 115V, 60Hz, 1.6HP
- Dust ignition protected
- HEPA filter included
- 99.99% at 0.3 microns
- 9 gallon capacity
- Stainless Steel tank
- Designed for the recovery of fine powders
- Complete static dissipating

VAC-EX-120-9-SS: Dry application, dust ignition protected industrial vacuum, 115-volt electric, including HEPA filters, 9 gallon static dissipating disposable collection bag, stainless steel tank with casters and 1 1/2" vacuum accessory kit

REPLACEMENT ACCESSORIES



88-212100CS

88-381163

88-212245

88-218626

88-211013

VAC-EX-120-9-SS

Motor Power	1.6 HP
Input Power	10.2 amps, 115V, 60Hz
Power Supply Cord	35'
Static Water Lift	105"
Air Displacement	105 CFM
Filtration Standard	0.3 microns HEPA 99.99%
Dry Capacity	9 gallons
Noise Level	72 dB
Dimensions	50" high x 19.5" wide x 26.5" length
Weight	90 lbs

COMPACT AND POWERFUL VACUUM



CERTIFIED FOR USE IN HAZARDOUS LOCATIONS:
• Class II, Division 2, Groups F & G



VAC-EX-120-5-SS Powerful. Compact.

Whether picking up flour or sugar, coal dust or cocoa, spent shell casings or black powder residue, the VAC-EX-120-5-SS is the perfect 120V solution for fine powder pickup.

Compact and powerful, this CSA certified dry pickup vacuum includes impressive features like HEPA filtration to 99.99% on 0.3 microns particles, 5 gallon capacity stainless steel tank and four swivel wheels. Includes everything needed to get to work quickly.

VAC-EX-120-5-SS: Dry application, dust ignition protected industrial vacuum, 120-volt electric, including HEPA filters, 5 gallon static dissipating disposable collection bag, stainless steel tank with casters and 1 1/2" vacuum accessory kit (shown below).....

VAC-EX-120-5-SS	
Motor Power	1.6 HP
Input Power	10.2 amps, 120V, 60Hz
Power Supply Cord	35'
Static Water Lift	105"
Air Displacement	105 CFM
Filtration Standard	0.3 microns HEPA 99.99%
Dry Capacity	5 gallons
Noise Level	72 dB
Dimensions	39" high x 19.5" wide x 19.5" length
Weight	54 lbs

FEATURES

- Electric 120V, 60Hz, 1.6HP
- Certified explosion proof/dust ignition proof
- HEPA filter included
- 99.99% on 0.3 microns
- 5 gallon capacity
- Stainless Steel tank
- Designed for the recovery of fine powders
- Complete static dissipating



REPLACEMENT COLLECTION BAGS

VAC-994-SD3: Static dissipating disposable collection bags (3 pack)

REPLACEMENT ACCESSORIES





SAFETY IS FIRST WITH THIS EXPLOSION PROOF VACUUM



DESIGNED FOR USE IN HAZARDOUS LOCATIONS:

- Class I, Division 2 Groups A, B, C & D
- Class II, Division 2 Groups F & G

NEW & IMPROVED - LARGER TANK!



|| 2G EX G || BT6 GB
|| 2D EX H ||| CT85°C DB



FEATURES

- Air-powered
- Detachable roll-out collection tank
- External filter shaker
- Reusable pocket filter
- Tool basket

DV-AV-EP State of the Art

Plants and facilities that contain flammable, combustible or hazardous materials require special equipment. With the Air-Powered DV-AV-EP Dry Vacuum, you will be fully prepared should you encounter such situations.

Risk-free operation is assured with a non-sparking stainless steel tank and anti-static 1 micron pocket filter. An external filter shaker saves time by keeping the filters clear so you don't have to, and a detachable collection tank enables you to empty its contents with minimal time and effort.

DV-AV-EP: Air-powered Dry Explosion Proof Vacuum, including grounding cable, anti-static filter, external filter shaker, 27 gallon non-sparking stainless steel detachable tank, handles, casters and tool basket

Note: Vacuum does not include accessories. Order DA-EP-KIT.

GROUNDING AIR SUPPLY HOSE

DV-AH-50: Grounded Air Supply Hose, 1/2" I.D. x 50' ...

REPLACEMENT FILTER

DA-AH-PF: Anti-Static Pocket Filter, 1 micron.....

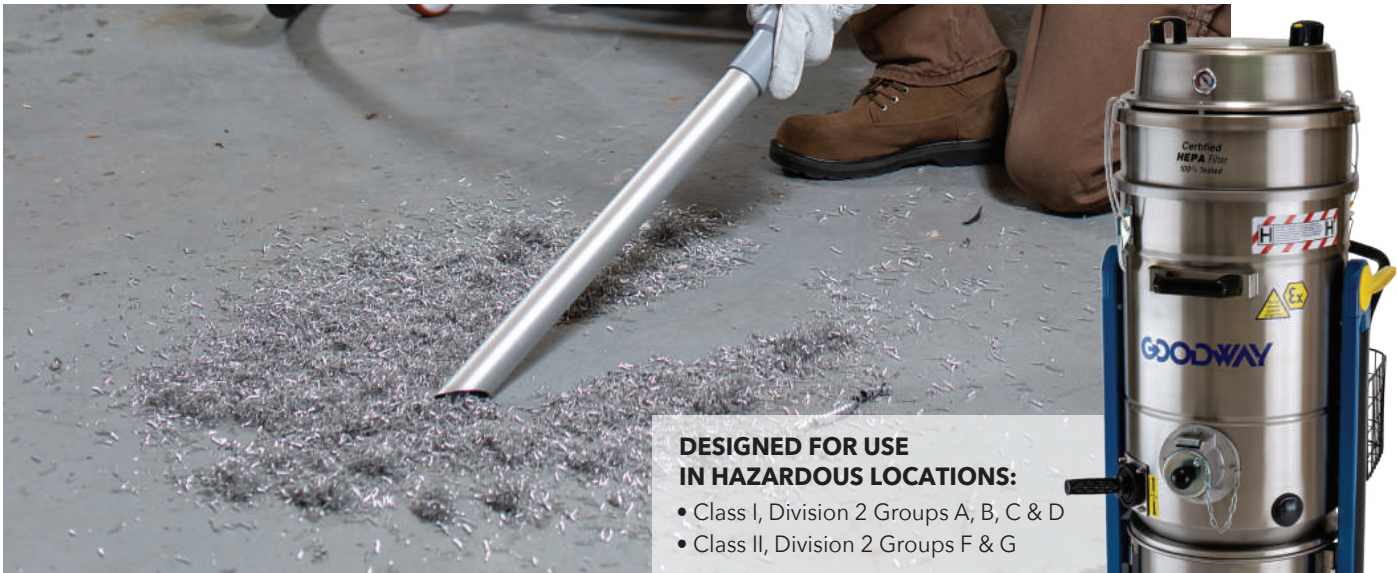
DID YOU KNOW?

- Many materials can become combustible when they become powdered.
- Speak to your safety manager before purchasing vacuums.
- Before purchasing, match your specific material pickup needs to specific NEC divisions and classes.

DV-AV-EP

Air Requirements	Minimum 50 PSI at 35 CFM, Maximum 90 PSI at 50 CFM
Air Line	1/2" I.D. or larger
Static Water Lift	160" at 90 PSI
Air Displacement	125 CFM at 90 PSI
Filtration	1 micron anti-static pocket
Tank	27 gallons stainless steel
Dry Capacity	23 gallons
Noise Level	74 dBA
Dimensions	20 1/2" diameter tank x 64" high
Weight	132 lbs

AIR-POWERED HEPA - SAFETY PERFORMANCE



**DESIGNED FOR USE
IN HAZARDOUS LOCATIONS:**

- Class I, Division 2 Groups A, B, C & D
- Class II, Division 2 Groups F & G

DV-AV9-EX Safety First

Facilities with cleaning needs in explosive environments can depend on the compact DV-AV9-EX to safely get the job done. This UL Certified air-powered vacuum cleaner is fitted with a HEPA filter for capturing 99.99% of particles down to 0.3 microns and a 1-micron anti-static pocket pre-filter.

An external filter shaker and detachable 12-gallon collection tank completes its features.

DV-AV9-EX: Air-powered Dry Only Explosion Proof Vacuum, including anti-static grounded filters, external filter shaker, 12 gallon stainless steel detachable tank, and 4-wheel dolly

Note: Vacuums do not include accessories. Order DA-EP-KIT.

DV-AV9-EX	
Air Requirements	Minimum 50 PSI at 35 CFM, Maximum 90 PSI at 50 CFM
Air Line	1/2" I.D. or larger
Static Water Lift	160" at 90 PSI and 50 CFM
Air Displacement	125 CFM at 90 PSI and 50 CFM
Filtration	1 micron anti-static pocket and 0.3 microns HEPA
Tank	12 gallons stainless steel
Dry Capacity	10 gallons
Noise Level	76 dBA
Dimensions	15" diameter tank x 51" high
Weight	97 lbs



FEATURES

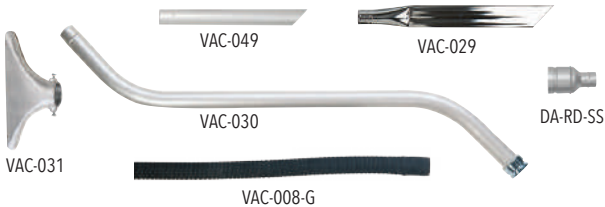
- Air-powered
- Large HEPA filter
- Detachable roll-out collection tank
- External filter shaker
- Completely grounded and safe

REPLACEMENT FILTER

DA-HF: HEPA Filter

DA-PF-16A: Anti-Static Pocket Filter, 1 micron

VACUUM KITS



DA-EP-KIT: 2" Grounded DV Vacuum Accessory Kit: 15' Neoprene Wire Reinforced Hose with Grounding Wire, Stainless Steel Hose Adapter for connecting DV Vacuums to 2" hoses, 56" Double Bend Wand, 18" Bulk Pickup Nozzle, 13" Aluminum Gulper Tool and 24" Aluminum Crevice Tool



SAFETY AND CONVENIENCE IN ONE MACHINE



**LARGE CAPACITY TANK,
WET-DRY VACUUM**



DESIGNED FOR USE IN HAZARDOUS LOCATIONS:

- Class I, Division 1 Group D T3C
- Class II, Division 1 Groups E, F, G



VAC-EX-120-25SS

Even in hazardous conditions, the VAC-EX-120-25SS gives you peace of mind with the convenience of standard 120V power. This CSA certified vacuum includes a complete static dissipating tool kit and suction hose and is ready to go to work in most hazardous environments.

VAC-EX-120-25SS: VAC-EX-120-25SS Explosion Proof Wet/Dry Electric HEPA Vacuum, including HEPA filter, dry filter, wet filter, tilting 25 gallon stainless steel tank with dump valve, antistatic 1½" x 10' Kanaflex hose, double bend wand, stainless steel crevice tool, dusting brush with conductive bristles, curved tip nozzle, floor tool with brass wheels, conductive bristle strips and rubber squeegee strip.....

FEATURES

- Explosion proof/dust ignition proof
- HEPA filter – included with an efficiency of 99.995% on 0.3 microns
- Wet/dry recovery
- Designed for the recovery of flammable and toxic powders
- Electric 1.3HP 120v 60hz
- 40' 14-3 Power cord (male plug not included)
- Complete static dissipating tool kit and suction hose included
- Drain valve for easy emptying

REPLACEMENT ACCESSORIES



88-211010



88-381400GW



88-211013



88-381372D



88-323313A



88-381185DA



88-381236



88-381364A



88-383462D

SEE PAGES 151-159

VAC-EX-120-25SS

Motor Power	1.3 HP
Input Power	9 amps, 120V, 60 Hz
Power Supply Cord	40', 14-3
Static Water Lift	70"
Air Displacement	133 CFM
Filtration	HEPA 99.995% at 0.3 microns
Tank	25 gallons stainless steel
Dry Capacity	16 gallons
Wet Capacity	17 gallons
Noise Level	75 dBA
Dimensions	43" high x 27" wide x 27" deep
Weight	100 lbs

TOP OF THE CLASS EXPLOSION PROOF

AIR-POWERED HEPA



VAC-EX-AV-25SS

Facilities with normally explosive and hazardous conditions require top-rated certified equipment they can trust. This air-powered industrial vacuum meets more safety ratings than any other explosive environment vacuum we manufacture! Ratings include, Class I, Div. 1 – group ratings A, B, C, D and Class II, Div. 1 – groups E, F and G. The list of features goes on and on.

The true HEPA-rated downstream mounted filter assures additional safety for both wet and dry applications and a tilting 25 gallon stainless steel SAE 304 tank with less than 10 Ohms of resistivity, make this vacuum safe and high volume, all in one!

VAC-EX-AV-25SS: VAC-EX-AV-25SS Explosion Proof Wet/ Dry Air-powered HEPA Vacuum, including HEPA filter, dry filter, wet filter, tilting 25 gallon stainless steel tank with dump valve, grounded air supply hose, antistatic 1 1/2" x 10' Kanaflex hose, double bend wand, stainless steel crevice tool, dusting brush with conductive bristles, curved tip nozzle, floor tool with brass wheels, conductive bristle strips and rubber squeegee strip.....

SAFE AND HIGH VOLUME, ALL IN ONE!



DESIGNED FOR USE IN HAZARDOUS LOCATIONS:

- Class I, Division 1 Groups A, B, C, D
- Class II, Division 1 Groups E, F, G (NFPA 70)

FEATURES

- Lab-tested explosion/dust ignition proof
- HEPA filter – included with an efficiency of 99.995% on 0.3 microns
- Wet/dry recovery
- Designed for recovery of flammable and toxic powders
- Complete static dissipating tool kit and grounded air hose included
- Air-powered
- Drain valve for easy emptying

REPLACEMENT ACCESSORIES

88-211010

88-381400GW

88-211013

88-381372D

88-323313A

88-381185DA

88-381236

88-381364A

88-383462D

SEE PAGES 151-159

VAC-EX-AV-25SS	
Air Requirements	80 PSI at 40 CFM
Air Line	1/2" I.D. or larger
Static Water Lift	116" at 80 PSI
Air Displacement	106 CFM at 80 PSI
Filtration	HEPA 99.995% at 0.3 microns
Tank	25 gallons stainless steel
Dry Capacity	16 gallons
Wet Capacity	17 gallons
Noise Level	70 dBA
Dimensions	46" high x 27" wide x 30" deep
Weight	78 lbs



ALL DAY DURABILITY WITH THIS BENCH-TOP VACUUM



DV-SV All Day Durability

Here's a powerful, stationary dry vacuum that fits on top or under a workbench and runs all day, making it the perfect choice for production lines. It is engineered to meet and exceed your need for 24-hour performance with the help of a maintenance free, heavy-duty brushless blower motor and detachable collection container.

Cleaning the filter is equally maintenance free thanks to a filter cleaning feature that handles the task. No hassles, no downtime, just continuous performance.

DV-SV: Stationary Dry Continuous Duty Vacuum, including 1-micron cartridge filter, 4 gallon detachable tank.....

FEATURES

- Heavy-duty brushless blower motor
- Includes onboard filter cleaning system
- Detachable collection tank
- Compact design
- Pressure relief valve
- 1 micron cartridge filter

DV-SV

Motor Power	2.5 HP
Input Power	Standard: 8 amps, 230V, 50/60 Hz AC, three phase Optional: 4 amps, 460V, 50/60 Hz AC, three phase
Power Supply Cord	16', 14-4
Static Water Lift	108"
Air Displacement	136 CFM
Filtration	1 micron polyester cartridge filter
Tank	4 gallons stainless steel
Dry Capacity	3.5 gallons
Wet Capacity	N/A
Noise Level	70 dBA
Dimensions	33" high x 28" wide x 17.5" deep
Weight	98 lbs



VAC-075



DA-AR4850



DA-SV-CF

ACCESSORIES

VAC-075: Anti-Static Polyethylene Hose, 1 1/2" X 10'....

DA-AR4850: Intake Adapter

DA-SV-CF: 1-micron cartridge replacement filter

POWERFUL SUCTION, ANYTIME, ANYWHERE



DV-CD Hassle Free

The DV-CD combines continuous performance with easy maneuverability for a powerful industrial vacuum that you can use anywhere in your shop. With durable casters and an easy-rolling cart, this heavy-duty commercial unit can be rolled easily into place to complement a wide array of shop tools.

DV-CD: Dry Continuous Duty Vacuum, including filter, external filter shaker, 12 gallon detachable tank, handles and casters.....

REPLACEMENT FILTER

DA-PF-16A: Polyester, Antistatic Pocket Filter, 1 micron .

DV-CD	
Motor Power	3.5 HP
Input Power	Standard: 10 amps, 230V, 50/60 Hz AC, three phase; Optional: 5 amps, 460V, 50/60 Hz, three phase
Power Supply Cord	30', 14-4
Static Water Lift	118"
Air Displacement	176 CFM
Filtration	Standard: 1 micron polyester pocket Optional: 0.3 microns HEPA
Tank	12 gallons bonderized steel
Dry Capacity	12 gallons
Noise Level	70 dBA
Dimensions	45" high x 19" wide x 36" deep
Weight	185 lbs

FEATURES

- Quiet heavy-duty brushless blower motor
- Detachable roll-out collection tank
- External filter shaker
- Reusable pocket filter
- Caster brake
- 1 1/2", 2" or 3" hoses

REPLACEMENT FILTERS, LINERS & BAGS



DA-HF

DA-PF-16A

SEE PAGES 157-159



HEAVY-DUTY FILTERING AND PORTABLE PERFORMANCE



DV-Z75 All-Day Duty

The DV-Z75 is a powerful, continuous duty, high-capacity vacuum that occupies less space and can be moved around the plant floor easily.

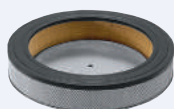
An external filter shaker helps to maintain consistent suction power. The same user-friendly detachable, roll-out tank found on the DV-CD simplifies unloading. High filtration and quiet operation make it perfect for recovering plastic dust, PVC powder, resins, and metal shavings in manufacturing areas, including automated production facilities.

FEATURES

- Heavy-duty brushless blower motor
- Detachable roll-out collection tank
- External filter shaker
- Reusable pocket filter
- Pressure relief valve
- Caster brake
- Tool basket
- 1 1/2", 2" or 3" hoses

DV-Z75: Industrial Dry Continuous Duty Vacuum, including filter, external filter shaker, 27 gallon detachable tank, handles and casters.....

Note: Vacuum does not include accessories. Order individual accessories shown on pages 151-159.



DA-AH-HF



DA-AH-PF

OPTIONAL FILTERS

DA-AH-HF: HEPA Filter, 0.3 microns

REPLACEMENT FILTER

DA-AH-PF: Anti-Static Pocket Filter, 1 micron

DV-Z75

Motor Power	4.5 HP
Input Power	7 amps, 460V, 50/60 Hz AC, three phase
Power Supply Cord	30', 14-4
Static Water Lift	100"
Air Displacement	217 CFM
Filtration	1 micron polyester pocket
Tank	27 gallons bonderized steel
Dry Capacity	27 gallons
Noise Level	77 dBA
Dimensions	20 1/2" diameter tank x 63" high
Weight	275 lbs

WALL-MOUNTED CONTINUOUS POWER



DV-CD4-FIXED Empties Easily

Now there’s a way for you to get continuous operation from a powerful shop vacuum without sacrificing critical shop floor space. The all-day-duty DV-CD4 Fixed is an industrial-strength unit that mounts easily and securely either on a stand or on the wall of your shop.

It’s designed to run for 24 hours a day without any fear of motor burnout. Plus, you’ll never have to wrestle with an overloaded trash bin. The bottom-mounted debris chute discharges contents into the collection container of your choice.

FEATURES

- Auto-empty
- External filter shaker
- Reusable pocket filter
- Pressure relief valve
- Wall mounting bracket
- 1 1/2", 2" or 3" hoses
- Heavy-duty brushless blower motor
- Bottom weight balanced debris chute

DV-CD4-FIXED	
Motor Power	4.5 HP
Input Power	Standard: 14 amps, 230V, 50/60 Hz AC, three phase; Optional: 7 amps, 460V, 50/60 Hz, three phase
Power Supply Cord	30', 14-4
Static Water Lift	100"
Air Displacement	217 CFM
Filtration	Standard: 1 microns polyester pocket Optional: 0.3 microns HEPA
Tank	20 gallons bonderized steel
Dry Capacity	20 gallons
Noise Level	77 dBA
Dimensions	20 1/2" diameter tank x 90" high
Weight	185 lbs

MOUNT ON
THE WALL*

**Optional stand for mounting
available with custom order*

DV-CD4-FIXED: Wall Mounted Dry Continuous Duty Vacuum, including filter, external filter shaker, 20 gallon tank and weight balanced dump chute

Note: Vacuum does not include accessories. Order individual accessories shown on pages 151-159.

REPLACEMENT FILTER

DA-AH-PF: Polyester Pocket Filter, 1 micron

DID YOU KNOW?

Creating a checklist before you buy a vacuum can help:

- What are you picking up? Heavy materials, light powders?
- Need wet pickup, or dry only?
- Need electricity, or is air-powered an option?



HEAVY-DUTY FILTRATION FOR COMPACT SPACES

3 MICRON FILTER FOR
HIGH FILTRATION



DV-CV8.5 Powerful. Mobile.

The DV-CV8.5 is affordable and one of our most powerful vacuums. Its star-shaped 3 micron filter is constructed from 32.29 square feet of material for high filtration of fine particles, including pharmaceutical dust, pigments from printing presses and much more.

This versatile unit can support two vacuum hoses at once, and includes an external filter shaker and detachable roll-out tank.

DV-CV8.5

Motor Power	8.5 HP
Input Power	13 amps, 460V, 50/60 Hz AC, three phase
Power Supply Cord	30', 14-4
Static Water Lift	140"
Air Displacement	353 CFM
Filtration	Standard: 3 microns polyester pocket Optional: 0.3 microns HEPA
Tank	27 gallons bonderized steel
Dry Capacity	27 gallons
Wet Capacity	26 gallons
Noise Level	76 dBA
Dimensions	60" high x 25" wide x 44" deep
Weight	285 lbs

FEATURES

- External filter shaker
- Reusable pocket filter
- Heavy-duty brushless blower motor
- Detachable roll-out collection tank
- Pressure relief valve
- Caster brake
- Tool basket
- 2" or 3" hoses

DV-CV8.5: Heavy-Duty Wet-Dry Continuous Duty Vacuum, including filter, external filter shaker, 27 gallon detachable tank, handles and casters*

Note: Vacuum does not include accessories. Order individual accessories shown on pages 151-159.

**Also available in stainless steel*

REPLACEMENT FILTER

DA-CV7.5-PF: Polyester Pocket Filter, 3 microns

OPTIONAL

DA-3-HF: HEPA Filter, 0.3 microns

DA-CAGE-B: Liquid Shut-Off Cage and Float for wet applications



DID YOU KNOW?

Horsepower does not always equal vacuum power.

- **CFM** - Volume of air a vacuum moves. Higher CFM is better for lighter objects, like powders.
- **Lift** - The raw lifting power. Higher is better for heavy materials or liquids.

TOUGH JOBS NEED HEAVY-DUTY FEATURES



DV-CV13 Superior Performance

The DV-CV13 is our most powerful vacuum! The rugged 13 HP continuous duty motor provides an impressive 92" of static water lift and 518 CFM of air flow. This mighty vacuum comes equipped with a 3 micron pocket filter offering a whopping 52.74 square feet of surface area.

DV-CV13: Heavy-Duty Wet-Dry Continuous Duty Vacuum, including filter, external filter shaker, 27 gallon detachable tank, handles and casters

Note: Vacuum does not include accessories. Order individual accessories shown on pages 151-159.

FEATURES

- Heavy-duty brushless blower motor
- Detachable roll-out collection tank
- External filter shaker
- Reusable pocket filter
- Pressure relief valve
- Caster brake
- Tool basket
- 3" hose

LIQUID SHUT-OFF CAGE AND FLOAT

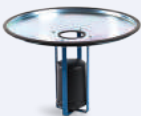
DA-CAGE-B: Liquid Shut-Off Cage and Float for wet applications

OPTIONAL FILTER

DA-3-HF: HEPA Filter, 0.3 microns.....

REPLACEMENT FILTER

DA-CV13-PF: Polyester Pocket Filter, 3 microns.



DA-CAGE-B



DA-3-HF



DA-CV13-PF

DV-CV13

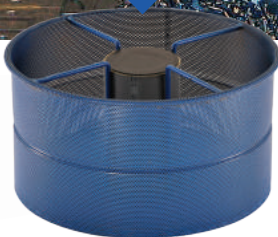
Motor Power	13 HP
Input Power	30 amps, 460V, 50/60 Hz AC, three phase
Power Supply Cord	30', 12-4
Static Water Lift	92"
Air Displacement	518 CFM
Filtration	Standard: 3 microns polyester pocket Optional: 0.3 microns HEPA
Tank	27 gallons bonderized steel
Dry Capacity	27 gallons
Wet Capacity	26 gallons
Noise Level	78 dBA
Dimensions	69" high x 25" wide x 55" deep
Weight	590 lbs



SAVE TIME WITH THIS EFFICIENT CHIP SEPARATOR



7 GALLON
CAPACITY BASKET
SEPARATES SOLIDS



FEATURES

- Two heavy-duty motors or Air-powered
- Coolant level indicator
- Liquid shut-off
- 1" Dump Valve
- Tangential intake port
- Metal chip basket
- Reusable filter
- 1 1/2" or 2" hoses

DV-2-MET Versatile and Economical

For first-rate performance while separating chips from coolant, the DV-2-MET ChipMaster® is the machine you can depend on. Not only does it collect and separate chips down to 0.05", but it also recovers clumps due to a specially designed tangential intake port.

The ChipMaster's large, 7 gallon capacity basket will hold solids, while fluids easily drain into the tank. Choose between electricity or compressed air power to suit your needs.

ELECTRIC POWERED UNIT

DV-2-MET: Chip/Coolant Recovery Vacuum, including filter, tangential intake port, 7 gallon metal chip basket, 27 gallon bonderized steel drum, handles, casters and dump valve

Note: Vacuums do not include accessories. Order VAC-KIT-5, VAC-KIT-5-G or individual accessories shown on pages 152-159.

DV-2-MET	
Motor Power	Twin motors - 2.7 HP (total)
Input Power	15 amps, 115V, 50/60 Hz AC
Power Supply Cord	30', 14-3
Air Requirements	N/A
Air Line	N/A
Static Water Lift	90"
Air Displacement	224 CFM
Filtration	0.05" metal chip basket
Tank	27 gallons bonderized steel
Dry Capacity	7 gallons
Wet Capacity	15 gallons
Noise Level	76 dBA
Dimensions	20 1/2" diameter tank x 44" high
Weight	150 lbs

VACUUM ACCESSORY KITS



VAC-KIT-5: 2" Bulk Pickup Vacuum Accessory Kit: 15' Smooth Bore PVC Hose, 56" Double Bend Wand, 18" Bulk Pickup Nozzle and 13" Aluminum Gulper Tool

VAC-KIT-5-G: 2" Grounded Bulk Pickup Vacuum Accessory

Kit: Same as VAC-KIT-5 except with grounding wire.....

YOUR SMALL MACHINE SHOP JUST GOT BIGGER



DV-CNC The Perfect Fit

If you're looking for a simple way to make substantial gains in the efficiency of your machine shop, look no further. The CNC Series ChipMasters return filtered coolant back to your machine tool or into a collection drum through an integrated transfer pump.

A second step through a .05" basket or an optional polypropylene filter provides additional filtration down to 300 microns. A tangential intake port allows you to recover not just chips and coolant, but clumps as well.

DV-CNC: Chip/Coolant Recovery Vacuum, including filter, tangential intake port, 11 gallon metal chip basket, 27 gallon bonderized steel drum, handles, casters, pump out system and hose

Note: Vacuum does not include accessories. Order individual accessories shown on pages 154-159.

FEATURES

- Rugged construction
- Coolant level indicator
- Liquid shut-off
- Tangential intake port
- Metal chip basket
- Reusable filter
- 1 1/2" or 2" hoses
- Optional 6 Micron coolant filter available

VAC-KIT-5

VAC-030

VAC-051

VAC-031

VAC-029

DA-CNC-PF

ACCESSORIES

VAC-KIT-5: 2" Bulk Pickup Vacuum Accessory Kit: 15' Smooth Bore PVC Hose, 56" Double Bend Wand, 18" Bulk Pickup Nozzle and 13" Aluminum Gulper Tool.....

DA-CNC-PF: Polypropylene Filter Assembly for DV-CNC, DV-CM, and DV-CM4 Vacuum

DA-CV.0042.0000: Intake Adapter.....

DV-CNC	
Motor Power	2.7 HP
Input Power	15 amps, 115V, 50/60 Hz AC
Power Supply Cord	30', 14-3
Static Water Lift	90"
Air Displacement	224 CFM
Filtration	Standard: 0.05" metal chip basket; Optional: 300 microns polypropylene
Tank	27 gallons bonderized steel
Dry Capacity	11 gallons
Wet Capacity	27 gallons
Noise Level	75 dBA
Dimensions	20 1/2" diameter tank x 52" high
Weight	110 lbs

HEAVY-DUTY TASKS FOR MACHINE SHOPS

DV-CM and DV-CM4

These revolutionary vacuums are the ideal choice for high volume machine shops. They separate chips down to 300 microns with the polypropylene filter. You can then activate the unit's integrated transfer pump to return the filtered coolant to your machine tool or a collection drum. The procedure is fast, easy and efficient.



DV-CM: Chip/Coolant Recovery Vacuum, including 22 gallon metal chip basket, nylon and polypropylene filters, 66 gallon liquid collection tank, handles, casters, transfer pump, and dump valve

DV-CM	
Motor Power	4.6 HP
Input Power	Standard: 13 amps, 230 V, 50/60 Hz AC
Power Supply Cord	30', 14-3
Static Water Lift	90"
Air Displacement	353 CFM
Filtration	Standard: 0.05" metal chip basket and 300 microns polypropylene
Reverse Pump-out System	40 GPM
Tank	66 gallons bonderized steel
Dry Capacity	22 gallons
Wet Capacity	66 gallons
Noise Level	78 dBA
Dimensions	46" high x 22" wide x 44" deep
Weight	220 lbs

FEATURES

- One (DV-CM4) or three (DV-CM) heavy-duty motors
- 66 gallon liquid collection tank
- Coolant level indicator
- Liquid shut-off
- High flow pump
- Metal chip basket
- Reusable filters
- 1 1/2" or 2" hoses
- 3" dump valve
- 6 Micron coolant filter available



DV-CM4: Chip/Coolant Recovery Vacuum, including 22 gallon metal chip basket, nylon and polypropylene filters, 66 gallon liquid collection tank, handles, casters, transfer pump, and dump valve

DV-CM4	
Motor Power	4.6 HP
Input Power	Standard: 13 amps, 230 V, 50/60 Hz AC, three phase Optional: 7 amps, 460 V, 50/60 Hz, three phase
Power Supply Cord	30', 14-4
Static Water Lift	100"
Air Displacement	217 CFM
Filtration	Standard: 0.05" metal chip basket and 300 microns polypropylene
Reverse Pump-out System	40 GPM
Tank	66 gallons bonderized steel
Dry Capacity	22 gallons
Wet Capacity	66 gallons
Noise Level	78 dBA
Dimensions	56" high x 22" wide x 44" deep
Weight	260 lbs

THE METAL CHIP VACUUM WITH AN APPETITE



DV-CM7.5-TILT Maximum Efficiency

From collection to separation to discharge, the Super ChipMaster® Tilt is a complete, soup-to-nuts system. Not only is it a powerful machine that devours chips and coolant, it is also a precision instrument that can filter shavings down to 300 microns. Plus, it finishes the task at hand.

An integrated transfer pump returns filtered coolant back to your machine tool while an internal basket tilts to dump out the chips. Simply put, the Super Chipmaster saves time, and valuable coolant, with very little effort.

DV-CM7.5-TILT	
Motor Power	6.5 HP
Input Power	10.3 amps, 460V, 50/60 Hz AC, three phase
Power Supply Cord	30', 14-4
Static Water Lift	160"
Air Displacement	170 CFM
Filtration	Standard: 0.05" metal chip basket Optional: 300 microns polypropylene
Reverse Pump-out System	50 GPM
Tank	119 gallons bonderized steel
Dry Capacity	14.5 gallons
Wet Capacity	105 gallons
Noise Level	78 dBA
Dimensions	75" high x 22" wide x 44" deep
Weight	395 lbs

FEATURES

- Heavy-duty motor 6.5 HP
- Liquid shut-off
- Reverse flow pump out system
- Tilt-tank
- Metal chip basket
- Cartridge safety filter
- 2" hoses
- 3" dump valve
- 105 gallon liquid collection tank
- Coolant level indicator

DV-CM7.5-TILT: Chip/Coolant Recovery Vacuum, including 17 gallon metal chip basket, 105 gallon liquid collection tank, tilt wheel, handles, casters, pump out system and dump valve.....

ACCESSORIES

VAC-KIT-5: 2" Bulk Pickup Vacuum Accessory Kit: 15' Smooth Bore PVC Hose, 56" Double Bend Wand, 18" Bulk Pickup Nozzle and 13" Aluminum Gulper Tool.....

DA-CV.0042.0000: Intake Adapter.....

OPTIONAL FILTER

DA-CM7.5-PF: Polypropylene Filter, 300 microns.....



DOUBLE BARREL PUMP-OUT WET PERFORMANCE



DV-802WD State of the Art

The DV-802WD industrial vacuum is designed for heavy-duty plant applications that demand high performance, portability and high volume liquid transfer, all in a convenient 115V model.

This model features industrial strength motors, HEPA filtering, stainless steel construction, and two high powered motors can be run independently, delivering power to pick up a variety of wet debris. However, this unit really shines in large volume environments where it boasts an 82" water lift that picks up liquids fast, and a 79 GPM integrated pump out system that eliminates the need for transfer tanks.

DV-802WD: Commercial, pump-out wet HEPA vacuum, 115V, including 26 gallon capacity (wet), internal pump (79 GPM) and pump out hose (30 ft.).....

Note: Vacuum does not include accessories. Order VAC-KIT-9-H or individual accessories.

DV-802WD	
Motor Power	6 HP
Input Power	17 amps, 115V, 50/60 Hz
Power Supply Cord	30', 10-3
Static Water Lift	82"
Air Displacement	144 CFM
Filtration	Standard: 300 micron PPL anti-foam wet filter HEPA: .18 micron
Tank	26 gallons
Noise Level	78dB
Dimensions	47" high x 19" wide x 23" deep
Weight	108 lbs
Pump Out Volume	79 GPM
Wet Capacity	26 gallons

FEATURES

- Compact design
- Stainless steel construction
- Two independent motors
- HEPA filtering
- Integrated pump out feature



ACCESSORIES

- VAC-075:** Anti-Static Polyethylene Hose, 1 1/2" X 10'
- DA-AR4850:** Intake Adapter
- VAC-009-C:** Double Bend Wand, 54"
- VAC-015:** Squeegee Floor Tool, 14"
- DA-FI.0013:** HEPA Filter for DV-SV Vacuums

BACKPACK DESIGN AND HEPA PERFORMANCE



BPV-125H Compact

When you have a difficult job to do and not much room to do it, the BPV-125H makes any hard to reach job easy. Totally self contained, light and comfortable, this is high-efficiency cleaning for those tight out of the way places.

Tiny nuisance particles can't escape from the large capacity HEPA filter while the bigger stuff stays trapped inside the paper collection bag. An integrated tool belt will save time by eliminating wasted trips looking for the right attachment.

BPV-125H: Backpack Dry HEPA Vacuum, includes hose, wand and accessories.....
Non HEPA model available.

FEATURES

- Paper filter collection bag
- Heavy-duty motor
- High-impact, molded plastic body
- Tool belt
- Multiple cleaning tools
- Includes hose, wand and tools

REPLACEMENT FILTER

BPV-125-10: Cartridge filter

BPV-125-12: HEPA filter

DON'T FORGET TO ORDER REPLACEMENT FILTERS



BPV-125-10

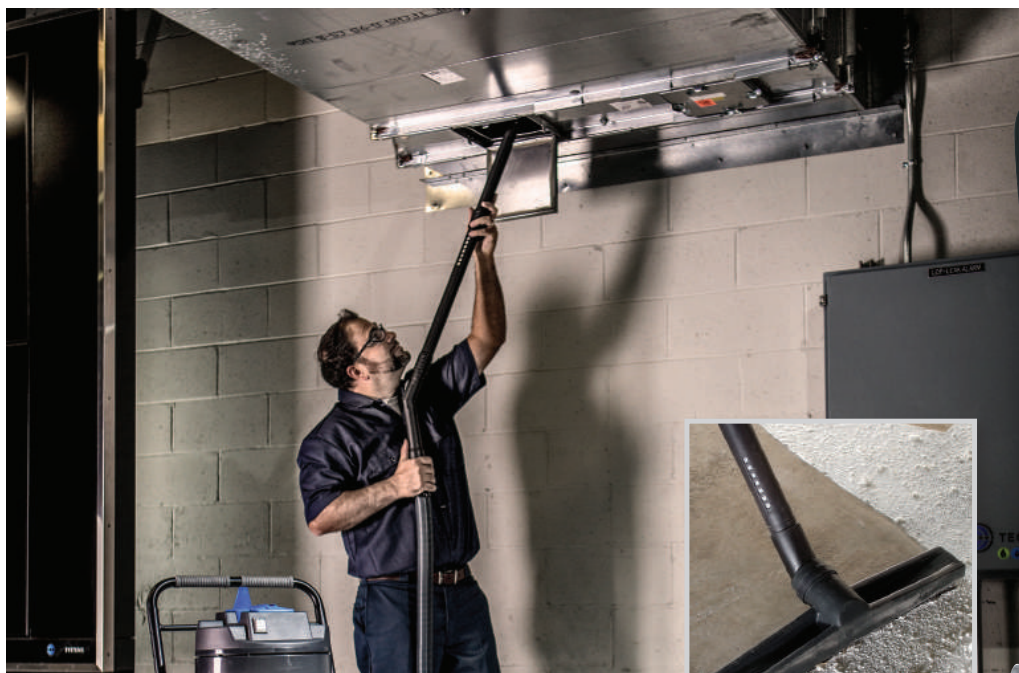


BPV-125-12

BPV-125H	
Motor Power	1.25 HP
Power	1350W
Input Power	Standard: 10.5 amps, 115V 50/60 Hz
Power Supply Cord	45'
Static Water Lift	125"
CFM	53 CFM
Fleece Bag Capacity	0.87 gallons (3.3L)
Filtration	1 microns paper and 0.3 microns HEPA
Tank	1.5 gallons
Noise Level	65 dBA
Weight	11 lbs (4.9 kg)
Dimensions	20 " high x 12 "wide x 14" deep



CLEAR AIR WITH THIS HEPA FINE-PARTICLE VAC



EV-30H Fine Filtration

Here's a commercial dry HEPA vacuum that brings new meaning to the term "environmentalism". A healthy climate starts with the air immediately around you. The EV-30H was designed specifically to protect you from fine particles that are associated with health risks, especially when airborne.

A three-stage filtration system, including 0.3 microns HEPA filter, ensures that only safe air is allowed to return to your workspace. A wide assortment of attachments is also included to effectively remove particles from tight corners and open spaces alike.

EV-30H: Commercial Dry HEPA Vacuum, including filters, 10.6 gallon polished steel tank, handles, wheels and casters, 8 1/2' vinyl crushproof hose, three piece 52" wand, 16" floor brush, 3" dusting brush, and 9 1/2" crevice tool

FEATURES

- Large HEPA filter
- 3.2 gallon paper filter collection bag
- Plastic bag tank liner
- Heavy-duty motor
- Polished steel tank
- Multiple cleaning tools
- Includes hose, wand and tools

EV-30H	
Motor Power	1.6 HP
Input Power	Standard: 10 amps, 115V, 50/60 Hz AC Optional: 5 amps, 230V, 50/60 Hz
Power Supply Cord	27', 16-3
Static Water Lift	90"
Air Displacement	115 CFM
Filtration	5 microns paper, 2 microns paper and 0.3 Microns HEPA
Tank	10.6 gallons polished steel
Dry Capacity	3.2 gallons
Noise Level	78 dBA
Dimensions	13" diameter tank x 38" high
Weight	36 lbs

REPLACEMENT BAGS AND FILTERS

8050: HEPA Filter, 0.3 microns.....

8051-12: Paper Filter Collection Bag, 5 microns with plastic bag tank liner (package of twelve)

8052: Paper Filter Protector, 2 microns.....



ADDITIONAL POWER WITH NO COMPROMISES ON SAFETY



VAC-2-HEPA Safe Solution

You'll enjoy the added versatility of both wet and dry performance, plus certified safety with the dual-motor VAC-2-HEPA commercial vacuum. Dedicated intakes for both wet and dry operation make switching from one to the other a simple procedure.

Featuring a large HEPA filter and increased horsepower, this unit handles fine, powdery particles just as well as it picks up heavy industrial debris. The superior filtration system ensures that only safe air will return from the exhaust.

FEATURES

- Large HEPA filter
- Plastic bag tank liner
- Two heavy-duty motors
- Exhaust muffler
- Stainless steel tank
- Liquid shut-off
- Metal deflector
- 1 1/2" or 2" hoses
- Change filter indicator light
- 5 gallon paper filter collection bag

VAC-2-HEPA	
Motor Power	2.7 HP (total)
Input Power	Standard: 13 amps, 115V, 50/60 Hz AC Optional: 6.5 amps, 230V, 50/60 Hz
Power Supply Cord	37', 14-3
Static Water Lift	66"
Air Displacement	150 CFM
Filtration	5 microns paper, and 0.3 microns HEPA
Tank	20 gallons stainless steel
Dry Capacity	5 gallons
Wet Capacity	12 gallons
Noise Level	74 dBA
Dimensions	15" diameter tank x 40" high
Weight	64 lbs

VAC-2-HEPA: Industrial Wet/Dry HEPA Vacuum, including filters, 20 gallon stainless steel tank, handles, wheels and casters.....

Note: Vacuum does not include accessories. Order VAC-KIT-9-H or individual accessories shown on pages 151-159.

ACCESSORIES

VAC-KIT-9-H: 1 1/2" HEPA Vacuum Accessory Kit: 15' Smooth Bore PVC Hose, 54" Double Bend Wand, 54" Extension Tube, 5' Extension Tube, 14" Nylon Floor Brush, 14" Squeegee Floor Tool, 14" Rough Surface Fiber Shod Floor Tool, 8" Wall and Overhead Brush, and 27" Steel Crevice Tool



VAC-KIT-9-H

STORAGE POUCH

VAC-TOOL-TOTE: Durabond Tool Storage Pouch..

REPLACEMENT FILTERS

1811: Paper Filter Protector, 5 microns.....

VA-1084-12: Paper Filter Collection Bag, 5 microns with plastic bag tank liner (package of twelve)

VACP-88: HEPA Filter Assembly, 0.3 microns



1811



VA-1084-12



VAC-P-88

VACUUM HEAD + ADAPTER RING ONLY

The VAC-2-HEPA Wet-Dry Vacuum is available with the HEPA filter assembly, the wet pickup assembly, and an adapter ring for mounting on a 55 gallon drum.

VAC-2-55-HEPA: Industrial Wet-Dry HEPA Vacuum, including filters, and 22"- 24" diameter drum adapter ring



THE FOOD PROCESSOR'S HEPA VACUUM



Find on page 155

COLOR CODED
DUSTING BRUSHES

DV-3-SSH High Flow. High Lift.

Ideal for the dry food processing industry, the DV-3-SSH stainless steel HEPA vacuum features three heavy-duty motors, delivering an airflow of 286 CFM and 81" of static water lift. Vacuumed dry debris passes through a 3 micron efficient polyester pocket filter with expanded surface area and then through a HEPA certified 0.3 micron cartridge filter. Collected material is held in a 14 gallon stainless steel tank.

This rugged vacuum is available with a variety of accessories. It is the perfect choice for the recovery of fine dry material like whey, cheese, flour, sugar, tea and coffee dust.

FEATURES

- Three heavy-duty motors
- Large HEPA filter
- Reusable pocket pre-filter
- Detachable roll-out stainless steel collection tank
- External filter shaker
- 1 1/2", 2" or 3" hoses

CARBON FIBER VACUUM ACCESSORY KITS

These lightweight kits include an anti-static carbon-fiber wand and other versatile attachments that help clean walls, overhead beams, piping, and other hard-to-reach areas. Simple to use and attachments can be changed quickly and easily to save time and reduce costs, with no extra equipment needed.



VAC-KIT-DIV2-D

VAC-KIT-DIV2-D: (For DV vacuums), includes carry bag **Call for Price**

VAC-KIT-DIV2-T: (For VAC-EX, VAC-2, VAC-3, AV-1200, and GTC-540 vacuums), includes carry bag **Call for Price**

DV-3-SSH: Industrial Dry HEPA Vacuum, including filters, external filter shaker, 16 gallon detachable stainless steel tank, and handles, casters.....

DV-3-SSH	
Motor Power	3 HP (total)
Input Power	18.2 amps, 115V, 50/60 Hz AC
Power Supply Cord	30', 12-3
Static Water Lift	81"
Air Displacement	286 CFM
Filtration	3 microns polyester pocket and 0.3 microns HEPA
Tank	16 gallons stainless steel
Dry Capacity	16 gallons
Noise Level	78 dBA
Dimensions	20 1/2" diameter tank x 49" high
Weight	145 lbs

EXTREME HEPA EFFICIENCY FOR ULTRA-FINE PARTICLES



DV-AH Certified HEPA

Collect and contain dangerous fine particles no matter where your work takes you with this uniquely designed dry vacuum. By combining a powerful venturi with an ultra-efficient HEPA filter and anti-static pre-filter, the DV-AH is 99.999% efficient at 0.3 microns.

As an air-powered unit, it's also perfect for situations where electricity is not available. You can empty the contents with ease by simply rolling the collection tank out from under the unit with no need for removing the vacuum head or filters.

DV-AH	
Air Requirements	Minimum 50 PSI at 35 CFM, Maximum 90 PSI at 50 CFM
Air Line	1/2" I.D. or larger
Static Water Lift	160" at 90 PSI
Air Displacement	125 CFM at 90 PSI
Filtration	1 micron anti-static pocket and 0.3 microns HEPA
Tank	12 gallons bonderized steel
Dry Capacity	12 gallons
Noise Level	76 dBA
Dimensions	15" diameter tank x 51" high
Weight	97 lbs

NEW &
IMPROVED -
LARGER TANK!

FEATURES

- Air-powered
- Large HEPA filter
- Reusable anti-static pocket pre-filter
- Detachable roll-out collection tank
- External filter shaker
- 1 1/2", 2" or 3" hoses

DV-AH: Air-powered Industrial Dry HEPA Vacuum, including filters, external filter shaker, 12 gallon detachable tank, handles, and casters.....
Note: Vacuum does not include accessories. Order individual accessories shown on pages 154-159.

REPLACEMENT FILTERS

DA-HF: HEPA Filter.....

DA-PF-16A: Anti-Static Pocket Filter, 1 micron

REPLACEMENT FILTERS, LINERS & BAGS

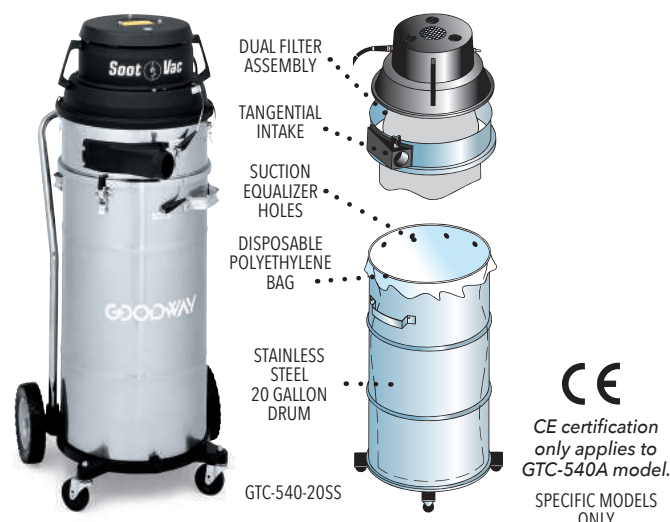


DA-HF

DA-PF-16A

SEE PAGES 157-159

WHAT ARE MY SOOTVAC OPTIONS?



GTC-540 Clean Solution

Boost the properties of your Firetube Boiler Cleaner with the GTC 540 clean solution from Goodway. Soot build-up could prove expensive, which is why it makes sense to enhance your firetube boiler's durability with this complete soot removal system.

The high CFM rating of the GTC-540 vacuum ensures speedy and tidy elimination of performance-robbing substances, with none of the filter clogging you'd expect from light, powdery materials like firetube soot.

SOOT VACUUM

GTC-540-20SS: Heavy-Duty Soot Vacuum including filters, tangential intake port, 20 gallon stainless steel soot/ powder recovery assembly, polyethylene tank liner, disposable polyethylene collection bag and dolly.....

GTC-540-15SS: Heavy-Duty Soot Vacuum, including filters, and 15 gallon stainless steel tank with handle and casters

GTC-540-30DD*: Heavy-Duty steel drum Soot Vacuum, including filters and 18"-20" diameter drum adapter ring with dolly.....

GTC-540-55DD*: Heavy-Duty steel drum Soot Vacuum, including filters and 22"-24" diameter drum adapter ring with dolly.....

**Note: Fits any standard drum - 30 or 55 gallon depending on model.*

FEATURES

- Two heavy-duty motors
- Four tank sizes
- Exhaust muffler (only 78 dBA)
- 1 1/2" or 2" hoses
- Reusable filters

DISPOSABLE POLY BAG OPTIONS



GTC-540 series vacuums are usable with a disposable polyethelene bag as well.

POLY-20-25: Poly Bag (package of 25) for 20 gallon drum

POLY-30-25: Poly Bag (package of 25) for 30 gallon drum



SootVac™- JR

Mounted on a sturdy dolly and weighing only 20 pounds, lifting and portability is a breeze with the SootVac, JR. Handling fine soot dust is no problem with a washable, high-efficiency cartridge filter protected by a 10 micron filter bag ensuring soot stays in the collection tank. Designed for gas-fired or light deposits, an inner plastic bag makes collection, sealing and disposal simple. All the features and offered accessories make this unit a perfect fit for cleaning tasks around the boiler room.

FEATURES

- 8' collapsible hose
- Disposable plastic collection bag
- 10 micron filter protector
- Washable, high-efficiency, 0.3 micron cartridge filter
- Stainless steel tank and carry handle
- Includes dolly

SOOTVAC-JR: Vacuum Cleaner 115V 50/60 Hz, on 7 gallon stainless steel tank and dolly with 8' hose for connection to the SAM -3 with crevice tool, floor tool, round brush

SOOTVAC-JR-A: Vacuum Cleaner 230V 50/60 Hz, on 7 gallon stainless steel tank and dolly with 8' hose for connection to the SAM-3 with crevice tool, floor tool, round brush.....

ACCESSORIES



BV-5-8



GTC-170S-QD

	GTC-540	SOOTVAC-JR
Motor Power	2 1/4 HP	1 HP
Input Power	Standard: 14 amps, 115V, 50/60 Hz AC Optional: 7 amps, 230V, 50/60 Hz AC	Standard: 6.7 amps, 115V 50/60 Hz Optional: 4 amps, 230V, 50/60 Hz
Power Supply Cord	37', 14-3	6', 18-3
Static Water Lift	50"	60"
Air Displacement	270 CFM	100 CFM
Filtration	15 microns polypropylene/Dacron	10 micron
Dry Capacity	20 gallons	4 gallons
Noise Level	78 dBA	89 dBA
Dimensions	15" diameter tank x 48" high (GTC-540-20SS)	20" diameter tank x 24" high
Weight	25 lbs (head only) and 70 lbs (GTC-540-20SS)	20 lbs

IT'S DOOMSDAY FOR DIRT IN HARD-TO-REACH PLACES

EASY ACCESS
TO REACH
EVERY CORNER!



BPV-125 - Powerful and Comfortable

If you need to bring powerful vacuum suction to cramped areas, the BPV-125 vacuum has got your back. From stairwells to aisles, seats to shelving, this comfortable backpack unit goes wherever you need to take it.

With over one full HP of cleaning power and a full set of attachments, this vacuum tackles tough dirt in tight corners like a pro. It comes with an integrated tool belt, so you'll save time by always having the right attachment at your fingertips.

FEATURES

- Paper filter collection bag
- Heavy-duty motor
- High-impact, molded plastic body
- Tool belt
- Multiple cleaning tools
- Includes hose, wand and tools

BPV-125: Backpack Dry Vacuum, includes hose, wand and accessories..... **Call for Price**

REPLACEMENT ACCESSORIES



BPV-125	
Motor Power	1.25 HP
Power	1350W
Input Power	Standard: 10.5 amps, 10.5 A 115V 50/60 Hz
Power Supply Cord	45'
Static Water Lift	125"
CFM	53 CFM
Fleece Bag Capacity	0.87 gallons (3.3L)
Filtration	1 micron paper and 0.3 microns HEPA
Tank	1.5 gallons
Noise Level	65 dBA
Weight	10.6 lbs (4.8 kg)
Dimensions	20 " high x 12 "wide x 14" deep

Industrial Vacuum, Dry, Continuous Duty • DV-SV-230



Product Overview

The DV-SV Stationary Dry Continuous Duty Vacuum is ideal for production lines. It uses a maintenance-free, heavy-duty brushless blower motor, designed to run non-stop, 24 hours a day - without fear of motor burnout. It produces a static water lift of 108" and an air displacement of 118 CFM. A cartridge filter traps particles down to 1 micron, while an external filter shaker keeps the filter clear. The compact size of the unit makes it ideal for use on or below a workbench, or work station.

DV-SV Stationary Continuous Duty Industrial Vacuum includes:

DV-SV Continuous Duty Industrial Vacuum filters external filter shaker, 6-gallon detachable tank, and platform.

Product Features

- Heavy-duty brushless blower motor - continuous operation
- Detachable collection tank - easy dumping
- External filter shaker - keeps filter clear
- Reusable pocket filter - saves money
- Filter system traps particles down to 1 micron - superior filtration
- Mounting holes - secures vacuum in position for stationary use
- Motor Power: 2.3 HP By Pass Motor
- Input Power: 8 amps, 230 V, 50/60 Hz AC, three-phase (Other options available)
- Power Supply Cord: 16', 12-4
- Static Water Lift: 108"
- Dry Capacity: 3.5 Gallons
- Air Displacement: 118 CFM
- Dimensions: 33" high x 28" wide x 17.33" deep
- Weight: 72 lbs

Industrial Vacuum, Dry, Heavy Duty, Wall Mounted Continuous Duty

• DV-CD4-FIXED-230



Product Overview

When floor space is tight, the DV-CD4-FIXED Wall Mounted Dry Continuous Duty Vacuum is the ideal solution. This powerful 4 HP vacuum can run non-stop, 24 hours a day without fear of motor burnout. The unit produces a static water lift of 118" and an air displacement of 206 CFM. A pocket filter traps particles down to 3 microns, while an external filter shaker keeps the filter clear. It also features a rear bracket for easy installation onto any wall, and a bottom mounted, weight balanced debris chute. The unit is designed to be positioned over a collection hopper, drum, or conveyor belt, for easy debris removal.

DV-CD4 Wall-Mounted Heavy Duty Continuous Duty Industrial Vacuum includes:

DV-CD4-FIXED Wall Mounted Dry Continuous Duty Vacuum, filter, external filter shaker, 20 gallon tank and weight balanced dump chute.

Note: Product does not include accessories. Order individual accessories for proper functionality.

Product Features

- Heavy-duty brushless blower motor - continuous operation
- Bottom mounted weight balanced debris chute - easy dumping
- External filter shaker - keeps filter clear
- Reusable pocket filter - saves money
- Filter system traps particles down to 3 microns - superior filtration

- Mounting bracket - secures vacuum to wall for stationary use
- Uses 1-1/2", 2" or 3" hoses - versatile
- Dry Performance
- Motor Power: 4 HP By Pass Motor
- Input Power: 14 amps, 230 V, 50/60 Hz AC, three phase (Other options available)
- Power Supply Cord: 30', 12-4
- Static Water Lift: 118"
- Air Displacement: 206 CFM
- Dimensions: 20 1/2" diameter tank, 90" high overall
- Weight: 185 lbs

Industrial Vacuum HEPA, Dry, Hazardous Material, Continuous Duty

• VAC-CD-5-EX



Product Overview

The workhorse VAC-CD-5-EX explosion-proof dry vacuum is engineered for large-volume recovery of dry ingredients and powders in food production facilities. Equipped with the highest quality 5-HP continuous duty rated TEFC motor, this unit can run continuously to keep up with your facility's vacuuming needs. Each unit features a 1-micron pre-filter, a 2nd stage HEPA filter, an external manual filter shaker, and a large capacity 14-gallon roll-out collection drum. The extra suction strength of this vacuum is ideal for areas that just need something more powerful, assuring that this machine will become an integral part of your plant's day-to-day operations.

Includes basic accessory kits. More are available.

Product Features

- Continuous-Duty rate motor
- "Explosion-proof" - See class specifications
- Detachable roll-out collection tank - easy dumping
- External filter shaker - keeps filter clear
- Reusable 1 Micron pre- filter
- Second-stage .03 Micron HEPA filter - gets it all
- Input Power: 6 AMPS, 480-Volt 3-Phase 50/60 Hz AC
- Static Water Lift: 155"

- Air Displacement: 255 CFM
- Dimensions: 47" (h) x 24" (w) x 40 (l)
- Weight: 248 lbs
- Dry Capacity: 14 gallons
- Certified for Class I, Division 2, Groups D, Class II, Division 2, Groups F and G T3C.

DV-2-MET Metal Shaving and Coolant Vacuum Kit • DV-2-MET-KIT



Product Overview

For first-rate 115V electrical performance, while separating chips from the coolant, the DV-2-MET ChipMaster® kit is a machine you can depend on. Not only does it collect and separate chips down to 0.05", but it also recovers strings and clumps, due to a specially designed tangential intake port. Despite ChipMaster's large, 11-gallon capacity basket, it is still easy to drain through the gravity-fed dump valve.

Includes complete accessory kit.

What's Included

DV-2-MET ChipMaster® Industrial Vacuum includes:

- (1) DV-2-MET Vacuum
- (1) VAC-051 smooth bore hose (2" x 15')
- (1) VAC-053-2 hose cuff 2"
- (1) DA-RD2 Intake adapter connection
- (1) VAC-029 Bulk pickup nozzle 18"
- (1) VAC-049 Crevice tool 24"
- (1) VAC-045 Utility nozzle 4-1/2"

Product Features

- Two heavy-duty motors
- Coolant level indicator

- Liquid shut-off
- 1" dump valve
- Tangential intake port
- 11 gal. metal chip basket
- 22 Gallon wet capacity
- Reusable filter
- Includes complete accessory kit
- Output Power: Twin motors - 2.7 HP total
- Input power: 15 Amps, 115 V, 50/60 Hz AC
- Power supply cord: 30', 14-3
- Static water lift: 90"
- Air displacement: 224 CFM
- Dimensions: 20 1/2" diameter tank x 44" high
- Weight: 150 lbs

EVEN THE TIGHTEST AREAS CAN BE "HEPA CLEAN"



BPV-100H – Compact

When you have a difficult job to do and not much room to do it, the BPV-100H makes any hard to reach job easy. Totally self contained, light and comfortable, this is high-efficiency cleaning for those tight out of the way places. Tiny nuisance particles can't escape from the large capacity HEPA filter while the bigger stuff stays trapped inside the paper collection bag. An integrated tool belt will save time by eliminating wasted trips looking for the right attachment.

BPV-100H: Backpack Dry HEPA Vacuum, including HEPA filter, paper filter collection bag, 2 1/2 gallon tank with straps, 51" vinyl crush proof hose, two piece 56" wand, 14" rug and floor tool, 5" upholstery tool, 3" dusting brush, and 17" crevice tool

FEATURES

- Large HEPA filter
- Paper filter collection bag
- Heavy-duty motor
- High-impact, molded plastic body
- Tool belt
- Multiple cleaning tools
- Includes hose, wand and tools
- UPLA Filter available

SPECIFICATIONS	
BPV-100H	
Motor Power	1.2 HP
Input Power	Standard: 8 amps, 115V, 60 Hz AC Optional: 4 amps, 230V, 50 Hz
Power Supply Cord	50', 16-3
Static Water Lift	75"
Air Displacement	124 CFM
Filtration	1 microns paper and 0.3 microns HEPA
Dry Capacity	2 1/2 gallons
Noise Level	65 dBA
Dimensions	8" diameter tank x 31" high
Weight	13 lbs

REPLACEMENT FILTER:

3205-10: Paper Filter Collection Bag,
1 micron (package of ten)

3204: HEPA Filter, 0.3 microns with bottom cap



Industrial, Continuous Duty Wet/Dry Vacuum • DV-CD-AD



Product Overview

The ultimate continuous-duty vacuum is engineered for seamless liquid collection, solid separation, and discharging liquid overflow. Designed for rigorous industrial demands, the powerhouse system boasts a continuous-duty vacuum producer that gathers materials through the intake hose and effectively separates solids to 300 microns via its internal chip basket and strainer bag.

Controlled by a state-of-the-art Smart Panel, the system's return pump operates with hassle-free precision, automatically activating and deactivating as liquid levels approach capacity, ensuring seamless operation without any manual intervention.

Minimal maintenance is needed as it features a sanitary collection tank, providing easy access for the swift disposal of solids, all without the need for any specialized tools.

What's Included

Continuous Duty Vacuum, with 16 Gallon liquid tank, smart panel liquid discharge, detachable 10-gallon chip basket, 300-micron strainer bag, and 8 ft pump out hose.

Product Features

- Powerful TEFC motor - strong suction
- High-volume Pump-Out - 40 GPM moves liquids quickly
- Smart panel-controlled return pump

- 24/7 continuous duty
- Easy to maintain - detachable perforated chip collection basket
- Motor Power: 4.6 HP TEFC
- Input Power: Standard: 6.6 Amps, 460V, 60 Hz | Optional: 6.8 Amps, 400V, 50 Hz
- Power Supply Cord: 30', 10-3
- Static Water Lift: 70"
- Air Displacement: 265 CFM
- Wet Capacity: 16 gallons
- Dry Capacity: 10 Gallons
- Reverse pump-out system: 40 GPM
- Weight: 275 lbs

TRIPLE MOTORS FOR HIGH LIFT AND HIGH FLOW



CE certification only applies to VAC-3A model.

VAC-3A – Superior Air Flow

Do you have a heavy-duty mess that other vacuums aren't quite up to? Three motors in the VAC-3A generate 66" of static water lift while moving 245 CFM of air. That translates into high-velocity cleaning of large volumes of dirt, debris and liquids pulled from your shop floor in seconds.

You also get a choice of 15, 30 or 55 gallon tank capacity for carting off the really tough jobs. Choose from a wide variety of available vacuum kits and tools to create the ultimate industrial wet-dry vacuum.

ACCESSORIES:

VAC-KIT-9:

1 1/2" Industrial Vacuum Accessory Kit: 10' Neoprene Wire Reinforced Hose, 54" Double Bend Wand, 54" Extension Tube, 5' Extension Tube, 14" Nylon Floor Brush, 14" Squeegee Floor Tool, 14" Rough Surface Fiber Shod Floor Tool, 8" Wall and Overhead Brush, and 27" Steel Crevice Tool..... **Call for Price**



DUMP VALVE (FACTORY INSTALLED):

DDV-100M: Full Flow Ball Valve, 1" **Call for Price**
DDV-E90: Elbow, 90° **Call for Price**
DDV-675: Garden Hose Connector **Call for Price**

STORAGE POUCH:

VAC-TOOL-TOTE: Durabond Tool Storage Pouch **Call for Price**

REPLACEMENT FILTERS:

GTC-175: Polypropylene Filter, 15 microns **Call for Price**
GTC-176: Dacron Filter, 15 microns **Call for Price**

FEATURES

- Three heavy-duty motors
- Exhaust muffler
- Three tank sizes
- Liquid shut-off
- Metal deflector
- Reusable filters
- 1/2" or 2" hoses

VAC-3A-15SS: Industrial Wet-Dry Vacuum, including filters, 15 gallon stainless steel tank, handles, wheels and casters..... **Call for Price**

VAC-3A-30: Industrial Wet-Dry Vacuum, including filters and 18"-20" diameter drum adapter ring (no drum) **Call for Price**

VAC-3A-30DD: Same as VAC-3A-30, plus 30 gallon bonderized steel drum and dolly **Call for Price**

VAC-3A-55*: Industrial Wet-Dry Vacuum, including filters and 22"-24" diameter drum adapter ring (no drum) **Call for Price**

VAC-3A-55DD: Same as VAC-3A-55, plus 55 gallon bonderized steel drum and dolly..... **Call for Price**

***Note:** Fits any standard drum 30 or 55 gallon depending on model.
Note: Vacuums do not include accessories. Order VAC-KIT-9, also shown on page 153, or individual accessories shown on pages 152-160.

VAC-3A	
Motor Power	4 HP (total)
Input Power	10 amps, 230V, 50/60 Hz AC
Power Supply Cord	37', 14-3
Static Water Lift	66"
Air Displacement	245 CFM
Filtration	15 microns polypropylene and 15 microns dacron
Tank/Drum	15 gallons stainless steel tank, or 30 or 55 gallons bonderized steel drum
Dry Capacity	14 gallons (stainless steel tank)
Wet Capacity	10 gallons (stainless steel tank)
Noise Level	78 dBA
Dimensions	15" diameter tank x 36" high (VAC-3A-15SS)
Weight	29 lbs (head only) and 70 lbs (VAC-3A-15SS)

Powerful, Electric Class II Div 2 Certified Explosion Proof Vacuum

• VAC-EX2-200H



Product Overview

Designed for combustible powders like flours, sugars, or additives, this 120V electric dry industrial vacuum is certified explosion-proof (Class II, Division 2, Groups F & G) and is NFPA 652 compliant. Compact and powerful, this vacuum boasts a 9-gallon detachable collection tank for added productivity, it will make quick work of cleanup in your plants and production environments.

Add the 99.99% at 0.3 microns HEPA filtration, a manual filter shaker, stainless steel construction, and this workhorse is ready to get your location clean quickly and safely.

What's Included

HEPA filters, 9-gallon static dissipating disposable collection bag, stainless steel tank with casters and 2" vacuum accessory kit.

Product Features

- 120V Convenience - no special power requirements
- 3rd Party NRTL Certified Class II Div 2
- Fully Bonded and Grounded

- External filter shaker
- Stainless Steel tank 9-gallon capacity
- Primary filtration is 99% efficient at 1 microns And secondary HEPA filtration is 99% efficient at 0.3 microns
- Motor: Electric 2.7HP
- Power Supply Cord: 33' with 20 amp chord cap
- Power Requirements: 15.2 Amps, 120V, 60 Hz
- Static Water Lift: 90"
- Air Displacement: 200 CFM
- Dimensions: 54.5"(h) x 23.5" (w) x 28" (l)
- Weight: 117 lbs
- Dry Capacity: 9 gallons

По вопросам продаж и поддержки обращайтесь:

Алматы (7273)495-231	Калининград (4012)72-03-81	Омск (3812)21-46-40	Сыктывкар (8212)25-95-17
Ангарск (3955)60-70-56	Калуга (4842)92-23-67	Орел (4862)44-53-42	Тамбов (4752)50-40-97
Архангельск (8182)63-90-72	Кемерово (3842)65-04-62	Оренбург (3532)37-68-04	Тверь (4822)63-31-35
Астрахань (8512)99-46-04	Киров (8332)68-02-04	Пенза (8412)22-31-16	Тольятти (8482)63-91-07
Барнаул (3852)73-04-60	Коломна (4966)23-41-49	Петрозаводск (8142)55-98-37	Томск (3822)98-41-53
Белгород (4722)40-23-64	Кострома (4942)77-07-48	Псков (8112)59-10-37	Тула (4872)33-79-87
Благовещенск (4162)22-76-07	Краснодар (861)203-40-90	Пермь (342)205-81-47	Тюмень (3452)66-21-18
Брянск (4832)59-03-52	Красноярск (391)204-63-61	Ростов-на-Дону (863)308-18-15	Ульяновск (8422)24-23-59
Владивосток (423)249-28-31	Курск (4712)77-13-04	Рязань (4912)46-61-64	Улан-Удэ (3012)59-97-51
Владикавказ (8672)28-90-48	Курган (3522)50-90-47	Самара (846)206-03-16	Уфа (347)229-48-12
Владимир (4922)49-43-18	Липецк (4742)52-20-81	Саранск (8342)22-96-24	Хабаровск (4212)92-98-04
Волгоград (844)278-03-48	Магнитогорск (3519)55-03-13	Санкт-Петербург (812)309-46-40	Чебоксары (8352)28-53-07
Вологда (8172)26-41-59	Москва (495)268-04-70	Саратов (845)249-38-78	Челябинск (351)202-03-61
Воронеж (473)204-51-73	Мурманск (8152)59-64-93	Севастополь (8692)22-31-93	Череповец (8202)49-02-64
Екатеринбург (343)384-55-89	Набережные Челны (8552)20-53-41	Симферополь (3652)67-13-56	Чита (3022)38-34-83
Иваново (4932)77-34-06	Нижний Новгород (831)429-08-12	Смоленск (4812)29-41-54	Якутск (4112)23-90-97
Ижевск (3412)26-03-58	Новокузнецк (3843)20-46-81	Сочи (862)225-72-31	Ярославль (4852)69-52-93
Иркутск (395)279-98-46	Ноябрьск (3496)41-32-12	Ставрополь (8652)20-65-13	
Казань (843)206-01-48	Новосибирск (383)227-86-73	Сургут (3462)77-98-35	
Россия +7(495)268-04-70	Киргизия +996(312)-96-26-47	Казахстан +7(7172)727-132	