

# SCALEBREAK, FOAM-CLEAR, GDS

## По вопросам продаж и поддержки обращайтесь:

Алматы (7273)495-231	Калининград (4012)72-03-81	Омск (3812)21-46-40	Сыктывкар (8212)25-95-17
Ангарск (3955)60-70-56	Калуга (4842)92-23-67	Орел (4862)44-53-42	Тамбов (4752)50-40-97
Архангельск (8182)63-90-72	Кемерово (3842)65-04-62	Оренбург (3532)37-68-04	Тверь (4822)63-31-35
Астрахань (8512)99-46-04	Киров (8332)68-02-04	Пенза (8412)22-31-16	Тольятти (8482)63-91-07
Барнаул (3852)73-04-60	Коломна (4966)23-41-49	Петрозаводск (8142)55-98-37	Томск (3822)98-41-53
Белгород (4722)40-23-64	Кострома (4942)77-07-48	Псков (8112)59-10-37	Тула (4872)33-79-87
Благовещенск (4162)22-76-07	Краснодар (861)203-40-90	Пермь (342)205-81-47	Тюмень (3452)66-21-18
Брянск (4832)59-03-52	Красноярск (391)204-63-61	Ростов-на-Дону (863)308-18-15	Ульяновск (8422)24-23-59
Владивосток (423)249-28-31	Курск (4712)77-13-04	Рязань (4912)46-61-64	Улан-Удэ (3012)59-97-51
Владикавказ (8672)28-90-48	Курган (3522)50-90-47	Самара (846)206-03-16	Уфа (347)229-48-12
Владимир (4922)49-43-18	Липецк (4742)52-20-81	Саранск (8342)22-96-24	Хабаровск (4212)92-98-04
Волгоград (844)278-03-48	Магнитогорск (3519)55-03-13	Санкт-Петербург (812)309-46-40	Чебоксары (8352)28-53-07
Вологда (8172)26-41-59	Москва (495)268-04-70	Саратов (845)249-38-78	Челябинск (351)202-03-61
Воронеж (473)204-51-73	Мурманск (8152)59-64-93	Севастополь (8692)22-31-93	Череповец (8202)49-02-64
Екатеринбург (343)384-55-89	Набережные Челны (8552)20-53-41	Симферополь (3652)67-13-56	Чита (3022)38-34-83
Иваново (4932)77-34-06	Нижний Новгород (831)429-08-12	Смоленск (4812)29-41-54	Якутск (4112)23-90-97
Ижевск (3412)26-03-58	Новокузнецк (3843)20-46-81	Сочи (862)225-72-31	Ярославль (4852)69-52-93
Иркутск (395)279-98-46	Ноябрьск (3496)41-32-12	Ставрополь (8652)20-65-13	
Казань (843)206-01-48	Новосибирск (383)227-86-73	Сургут (3462)77-98-35	
Россия +7(495)268-04-70	Киргизия +996(312)-96-26-47	Казахстан +7(7172)727-132	

# STOP SCALE IN ITS TRACKS WITH SCALEBREAK®



## ScaleBreak®

Goodway's ScaleBreak family of biodegradable descalers will safely dissolve calcium, carbonate, lime, rust, and other types of deposits from water passages in water-cooled or heated equipment faster than other liquid descalers. ScaleBreak is safe for use on steel, iron, brass, copper, plastic and rubber.

ScaleBreak-SS is specially formulated for use on stainless steel. When used as directed, it will help to improve the operating efficiency and extend the life of your equipment.

### COMMON CLEANING APPLICATIONS

- Boilers
- Heat Exchangers
- Water Piping Systems
- Chillers
- Cooling Towers
- Maritime Equipment
- Condensers
- Furnaces
- And Much More!

### SCALEBREAK®

This biodegradable solution dissolves calcium, lime, and rust on contact.

**SCALEBREAK-5** .....

### SCALEBREAK®-SS

This unique solution contains no hydrochloric acid (HCl) and is safe for prolonged exposure to stainless steel.

**SCALEBRK-SS** .....

### SCALEBREAK®-MP

ScaleBreak-MP is an industrial biodegradable descaler which will quickly and effectively dissolve calcium, lime, rust and other water formed deposits from water cooled/heated equipment.

ScaleBreak-MP is a unique tri-blend of base constituents with the inclusion of corrosion inhibitors, wetting and penetrating agents that work in harmony to offer excellent cleaning results and speed without compromising the long term integrity of equipment base metals.

**SCALEBRK-MP-5** .....

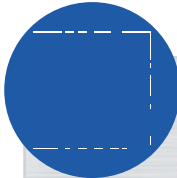
**SCALEBRK-MP-55** .....

**SCALEBRK-MP-275** .....

**SCALEBRK-MP-330** .....



**FORTIFIED WITH  
POWERFUL  
WETTING AND  
PENETRATING  
AGENTS AND  
SUPERIOR  
CORROSION  
INHIBITORS**



## START SAVING NOW!

### SCALEBREAK CALCULATOR TOOL

In just a few steps, increase system efficiency and save a ton of dough. These simple to use handy calculators help you with a variety of cost-saving calculations when using our products.

**SEE MORE SCALEBREAK PRODUCT  
INFORMATION ON PAGE 166**

**SEE THE  
DIFFERENCE  
FOR YOURSELF!**

## CALL TODAY FOR A FREE DEMO KIT!

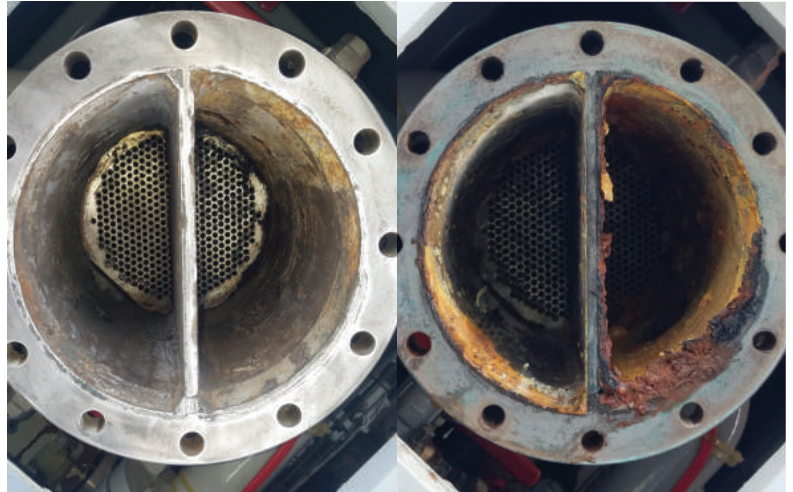
Request a ScaleBreak, ScaleBreak-SS or ScaleBreak-MP demo kit.





## How can ScaleBreak help you?

When dealing with calcium and other mineral buildup in your HVAC or process heating and cooling systems, the choices are limited. You can either drill or scrape with mechanical solutions, or use chemical products like ScaleBreak to safely dissolve those deposits. We always recommend chemical descaling when possible.



## When you have tough jobs ScaleBreak gets it done.

Descaling can be a rigorous task. Get your buildup issues taken care of the first time, every time, with Goodway's ScaleBreak chemical solutions and tools. ScaleBreak works across jobs filling needs for these and more:

- SHELL & TUBE HEAT EXCHANGERS
- BRAZED PLATE HEAT EXCHANGERS
- COOLING TOWERS AND COOLING TOWER FILL
- EVAPORATIVE CONDENSERS AND FLUID COOLERS
- CHILLERS & BOILERS

# GOODWAY SCALEBREAK

## INDUSTRY TRIED, TESTED, AND APPROVED

Major global manufacturers trust Goodway ScaleBreak descaling solutions in their heat exchange equipment.

Call Goodway today to discuss your specific need, and we'll help you find the proper solution.

### GOODWAY PARTNERS

THAT RELY ON THE GOODWAY SCALEBREAK SYSTEMS AND TOOLS:



A DOVER COMPANY





# COOLING TOWER CLEANING SOLUTIONS



OPTIMIZE YOUR TOWER  
HYGIENE, YOUR HEALTH  
IS IMPORTANT



## BioSpray® Tower

BioSpray Tower offers powerful sanitizing and disinfecting properties for use across various applications. This includes general surfaces, food contact surfaces, industrial surfaces, and more and has been approved by the EPA for use against SARS-CoV-2, the virus that causes COVID-19.

For HVAC use, including cooling towers, BioSpray Tower is used as a preventive maintenance sanitizer designed for application to all the

areas outside of the bulk water flow. Drift (small water droplets) from a contaminated cooling tower can carry Legionella and other harmful bacteria as far as 2 miles from your facility. That bacteria can then enter the lungs, infecting unsuspecting innocent people.

Unlike bulk water treatment, which only impacts water in contact with surfaces, BioSpray Tower works on hard surfaces to quickly kill 99.9% of Legionella. Apply liberally to exposed surfaces of towers, inside and out. BioSpray Tower will improve the overall health of the cooling so technicians can safely perform preventive maintenance. BioSpray Tower is a non-hazardous, non-regulated preventive maintenance sanitizer.

**BIOSPRAY-TOWER-5:** 5 Gallon container .....

Available in 55 gallon drum

## Foam-Clear™

Defoaming solution is a super concentrated defoaming chemical designed to instantly remove foam from industrial applications like descaling, coil cleaning and more.

In certain situations, excessive foam can cause annoyance or possible damage. FOAM-CLEAR reacts instantly, reducing foam and keeping it from forming again.

**FOAM-CLEAR-01:** .....



## ScaleBreak®-Gel

Goodway's ScaleBreak®-Gel is a patented, innovative viscous gel formulated for descaling vertical surfaces like cooling tower fill.

When used in conjunction with Goodway's TFC-200 system, ScaleBreak-Gel adheres to vertical surfaces allowing its powerful descaling properties to penetrate and dissolve water formed deposits into a liquid suspension for easy removal.

ScaleBreak-Gel is a completely water soluble product and is perfect for descaling cooling tower fill, tank walls or any other vertical surface.

**SCLBRK-GEL-05:** ScaleBreak-Gel is an acidic product, formulated to adhere to and descale mineral deposits from cooling tower fill or other vertical surfaces.....

## TowerShine™

TowerShine™ is a biodegradable, expanding foam detergent specifically formulated for use with the TFC-200 TowerWash.

### TOWERSHINE™-05:

Cooling Tower Fill  
Cleaning Solution,  
5 gallon buckets



Note: See page 63  
for information on  
the TFC-200.

# STOP THE DAMAGING EFFECTS OF SCALE DEPOSITS

## SCALEBREAK®, SCALEBREAK®-SS & SCALEBREAK®-MP

Goodway's ScaleBreak family of descalers safely dissolves mineral deposits faster than other liquid descalers on the market. These biodegradable cleaners will quickly dissolve calcium, lime, rust, and other types of deposits from water passages in water-cooled or heated equipment.

While ScaleBreak is safe for use on steel, iron, brass, copper, plastic and rubber, ScaleBreak-SS or ScaleBreak-MP can be used in stainless steel applications and for industrial water cooled/heated equipment. When used as directed, they will help to improve the operating efficiency and extend the life of your equipment.

Fortified with powerful low foaming, wetting and penetrating agents, and superior corrosion inhibitors, they are ideal for use on boilers, chillers, condensers, heat exchangers, oil coolers, cooling towers, furnaces, and water piping systems.



**RECOMMENDED  
PUMP SYSTEMS  
GDS-15-PH & GDS-C92**  
Find on pages 45, 47

**SCALEBREAK:** This biodegradable descaler is safe for use on steel, iron, brass, copper, plastic and rubber ....

**SCALEBREAK-SS:** ScaleBreak-SS contains no hydrochloric acid (HCl) and is safe for use on stainless steel .....

**SCALEBREAK-MP:** This industrial biodegradable descaler will quickly and effectively dissolve calcium, lime, rust and other water formed deposits from water cooled/heated equipment. ....



**AVAILABLE IN MULTIPLE SIZES**  
CALL FOR QUANTITY AND PRICING  
5 Gallon, 30 Gallon, 55 Gallon drums, and  
275 and 330 Gallon Totes.

## NEW! Scalebreak Calculator Tool

In just a few steps, increase system efficiency and save a ton of dough. These simple to use handy calculators help you with a variety of cost-saving calculations when using our products.

## SCALEBREAK-NEUTRALIZER

ScaleBreak Neutralizer is an alkaline crystal powder for neutralization of ScaleBreak product solutions, which may be acidic after use.

Approximately 1.3 pounds of ScaleBreak Neutralizer will neutralize a gallon of undiluted ScaleBreak to a pH of 5.5, which can be verified by pH test strips or a pH meter.

Though all of our descalers are biodegradable, biodegradability has no relevance on allowable facility discharge limits. Municipalities monitor pH and ScaleBreak Neutralizer will insure your effluent meets that pH value.

**SCLBRK-NEUT-25:**  
25 pound pail .....



## CALL TODAY FOR A FREE DEMO KIT!

Request a ScaleBreak, ScaleBreak-SS, or ScaleBreak-MP demo kit.





# ScaleBreak®-SS

## INDUSTRIAL DESCALING SOLUTION FOR STAINLESS STEEL



### QUICKLY DISSOLVES ALL TYPES OF LIME SCALE, RUST AND OTHER MINERAL DEPOSITS IN:

- Coils
- Tanks
- Piping
- Reactors
- Sterilizers
- Food Processing Equipment
- Commercial/Industrial Wash Machines
- Heat Exchangers, Plate & Frame, Shell & Tube and Spiral



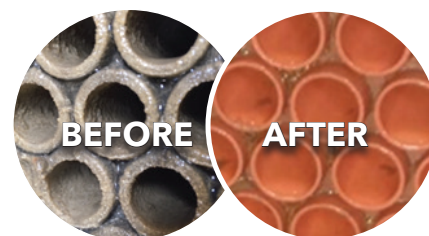
ScaleBreak-SS is available in 5, 30, 55, 275 & 330-gallon totes.

In today's industrial environment, companies cannot afford to have unexpected equipment shutdowns or failures. Preventative maintenance programs are more important than ever for heat transfer, energy efficiency as well as prolonging equipment longevity. Equally important is having the correct tools to perform your cleanings. **Goodway ScaleBreak-SS was specifically formulated for the safe removal of scale deposits within stainless steel based equipment.**

ScaleBreak-SS is a liquid solution fortified with powerful wetting and penetrating agents and superior corrosion inhibitors. ScaleBreak-SS should be circulated through the water passages for optimal results. By performing a circulation, ScaleBreak-SS will dissolve water formed deposits such as calcium,

lime and rust into a liquid suspension allowing them to be freely flushed from the system. Clean systems promote optimal heat transfer, efficient operation and increase the overall equipment life expectancy.

This biodegradable cleaner contains no HCl (Hydrochloric acid) yet retains the dissolving rate and speed normally associated with more aggressive base components. ScaleBreak-SS base properties are safe for the prolonged exposure to stainless steel and eliminates the long term potential of hydrogen embrittlement or stress corrosion cracking. Protect your stainless steel investment and use ScaleBreak-SS, the top choice for professionals.



PART NUMBER	GALLON SIZE
SCALEBRK-SS-5	5
SCALEBRK-SS-30	30
SCALEBRK-SS-55	55
SCALEBRK-SS-275	275
SCALEBRK-SS-330	330

# ScaleBreak® for Large Volume Needs • SCALEBREAK-LG-VOL



## Product Overview

The ScaleBreak family of descaling products are safe and easy to use and quickly remove lime, scale, rust, and other deposits from water passages in industrial machinery. These deposits drastically reduce efficiency and increase expenses and damage to vital components. Get a custom quote for your large descaling needs, from containers to truckloads.

Our advanced formulations include proprietary ingredients to deliver powerful lime and scale dissolving power while protecting against corrosion.

## What's Included

Formulas are available for general descaling and specific needs.

- Formulas for scale removal on copper, steel, plastic, runner, and more
- Formulas for descaling stainless steel
- Formulas for descaling cooling towers, plastic molds, and other systems.
- Custom blends and consulting are available for your exact needs.

## Product Features

- Available in a variety of formulas
- Custom formulas available
- Powerful lime, scale and rust removal.
- HCL (hydrochloric acid) and Non-HCL formulas
- Available in 5, 30, 55, 275 and 330-gallon containers

# Adapter, Multistack System • GDS-MSA-200



## Product Overview

Adapter for connecting the Goodway descaling system to Multistack or other grooved brazed plate heat exchanger. A set of two is required to attach to the top and bottom water supply. Available in multiple sizes to meet your exact needs.

## Product Features

- Quickly connect Goodway descaling systems to multistack brazed plate heat exchangers
- Available in a variety of sizes
- High quality construction

Model #	Water Connection Size	Goodway adaptor
MS010, MS015, MS020, MS030	2	GDS-MSA-200
MS050, MS070	2.5	GDS-MSA-250
MS085, MS080T	3	GDS-MSA-300
MS105, MS135, MS145, MS165	4	GDS-MSA-400



**По вопросам продаж и поддержки обращайтесь:**

Алматы (7273)495-231  
Ангарск (3955)60-70-56  
Архангельск (8182)63-90-72  
Астрахань (8512)99-46-04  
Барнаул (3852)73-04-60  
Белгород (4722)40-23-64  
Благовещенск (4162)22-76-07  
Брянск (4832)59-03-52  
Владивосток (423)249-28-31  
Владикавказ (8672)28-90-48  
Владимир (4922)49-43-18  
Волгоград (844)278-03-48  
Вологда (8172)26-41-59  
Воронеж (473)204-51-73  
Екатеринбург (343)384-55-89  
Иваново (4932)77-34-06  
Ижевск (3412)26-03-58  
Иркутск (395)279-98-46  
Казань (843)206-01-48  
Россия +7(495)268-04-70

Калининград (4012)72-03-81  
Калуга (4842)92-23-67  
Кемерово (3842)65-04-62  
Киров (8332)68-02-04  
Коломна (4966)23-41-49  
Кострома (4942)77-07-48  
Краснодар (861)203-40-90  
Красноярск (391)204-63-61  
Курск (4712)77-13-04  
Курган (3522)50-90-47  
Липецк (4742)52-20-81  
Магнитогорск (3519)55-03-13  
Москва (495)268-04-70  
Мурманск (8152)59-64-93  
Набережные Челны (8552)20-53-41  
Нижний Новгород (831)429-08-12  
Новокузнецк (3843)20-46-81  
Ноябрьск (3496)41-32-12  
Новосибирск (383)227-86-73  
Киргизия +996(312)-96-26-47

Омск (3812)21-46-40  
Орел (4862)44-53-42  
Оренбург (3532)37-68-04  
Пенза (8412)22-31-16  
Петрозаводск (8142)55-98-37  
Псков (8112)59-10-37  
Пермь (342)205-81-47  
Ростов-на-Дону (863)308-18-15  
Рязань (4912)46-61-64  
Самара (846)206-03-16  
Саранск (8342)22-96-24  
Санкт-Петербург (812)309-46-40  
Саратов (845)249-38-78  
Севастополь (8692)22-31-93  
Симферополь (3652)67-13-56  
Смоленск (4812)29-41-54  
Сочи (862)225-72-31  
Ставрополь (8652)20-65-13  
Сургут (3462)77-98-35  
Казахстан +7(7172)727-132

Сыктывкар (8212)25-95-17  
Тамбов (4752)50-40-97  
Тверь (4822)63-31-35  
Тольятти (8482)63-91-07  
Томск (3822)98-41-53  
Тула (4872)33-79-87  
Тюмень (3452)66-21-18  
Ульяновск (8422)24-23-59  
Улан-Удэ (3012)59-97-51  
Уфа (347)229-48-12  
Хабаровск (4212)92-98-04  
Чебоксары (8352)28-53-07  
Челябинск (351)202-03-61  
Череповец (8202)49-02-64  
Чита (3022)38-34-83  
Якутск (4112)23-90-97  
Ярославль (4852)69-52-93